

RIDDELL ROUNDUP

your Community newspaper



RIDDELLS CREEK
FARMERS MARKET
SAT 18TH OCT 2020

Support your local news.

Riddell Roundup is a not-for-profit publication brought to you every month by dedicated volunteers and auspiced by the Riddells Creek Neighbourhood House. Email riddellroundup@gmail.com to subscribe for your **free** full colour electronic copy.

-OCTOBER 2020-

Spring has Sprung!

Can you feel it? What a delight to get out into the fresh air, enjoy the lush green and listen to the busy sounds of spring.

The native flowers are just starting to bloom in Conglomerate Gully, with myrnong daisy, austral indigo, musky caladenia and paper daisies scattered along the track.

Our resident geese are proudly showing off their young along the main street and the bees can be heard humming in the flowering gums, enjoying the feast that is to be had.

The gardens of Riddells Creek are looking fabulous - buds are bursting everywhere and there is the sweet scent of fresh mown grass (oh yes, mowing season has started!).

Here are some photos from around town - enjoy!



FOODWORKS

RIDDELLS CREEK SUPERMARKET

A.B.N.: 81 832 613 909

2 STATION STREET, RIDDELLS CREEK VIC 3431

Phone: (03) 5428 6060

Email: admin@riddellscreekfoodworks.com.au

OCTOBER SPECIAL

FOODWORKS

Gift Voucher

Date: 1st - 31st October 2020

Authorised by John Williamson

Spend \$100.00 or more in one transaction and redeem this voucher at the time of that transaction to receive a TEN DOLLAR DISCOUNT. *Excludes tobacco and alcohol

PLU:2536

Issued by RIDDELLS CREEK FOODWORKS

(can only be redeemed at issuing supermarket)

AROUND RIDDELL

Pictures, Art, Opinions, History, Updates and Tales from Around Town



FRONT YARD BLITZ IN RIDDELLS CREEK

Spectacular Spring Gardens

The lawnmowers and chainsaws have been dusted off and the garden centre carpark has busy over the past month. The gardening gloves have been donned around town and gardens are looking lush, green and bursting with colour.

What a beautiful town we live in!

Here are a few of our wonderful examples/



COMMUNITY GROUP UPDATES

Volunteering, Safety, Community Building and Socialising

RIDDELLS CREEK CFA

REGISTER YOUR BURN-OFF

As part of your preparation for the upcoming fire season, if you're planning on doing any burning off there's a few things you must do:

BEFORE BURNING OFF

Check and follow local regulations or laws set down by CFA or your local council (to assist with property preparation for the upcoming fire season Macedon Ranges Shire Council has lifted the burning off restrictions for the month of October 2020 for land less than 4000 square metres - one acre).

- Notify neighbours at least two hours before starting the burn
- Check the weather forecast for the day of the burn and a few days afterwards
- Check the fuel moisture conditions
- Establish a fire break of no less than

three metres cleared of all flammable material

- Make sure there are enough people to monitor, contain and extinguish the burn safely and effectively

To ensure that the fire services are aware of your planned burn, please give the Emergency Services Telecommunications Authority (ESTA) prior notification. Manual forms are available to lodge burn off details but it's much easier to give them a call:

- Phone 1800 668 511 and provide the required information OR
- National Relay Service Users can ring 1300 555 727 and ask for Information to be relayed to ESTA via 1800 668 511

If burn off information is lodged into the system it helps mitigate brigades being called out unnecessarily.

IS YOUR PROPERTY CLEARLY NUMBERED?

Police, the fire brigade and ambulance services all report that hidden or

nonexistent property numbers can waste valuable time and as you should be aware, in an emergency situation every second counts. Owners and occupiers of all properties, including vacant land, are required by law to have a street number properly affixed and displayed at the front of their property. Numbers should be attached to a letterbox, a post, a dedicated board or the boundary fence. It is also a requirement that numbers displayed are reflective both day and night. In addition, where there is a concrete curb you may paint the number on the curb with no permit required.

TURN OUTS

Since writing the September article the brigade has been pretty quiet only being called upon to respond to emergency incidents on eight occasions. These incidents have consisted of two structure fires, one non-structure fire, two alarms, one incident and two grass & scrub fires. For these incidents there were six support calls to Gisborne, with



Before you burn-off:

- ✓ Check restrictions
- ✓ Check weather
- ✓ Have water nearby
- ✓ Never leave a fire unattended
- ✓ Put the fire out properly

Register your burn-off on 1800 668 511.



two incidents in the Riddells Creek Brigade area.

For the 2020 calendar year to date the brigade has responded to a total of 83 incidents.

BRIGADE CONTACT DETAILS

Fire Station Phone: 5428 6000
[www.facebook.com/](https://www.facebook.com/RiddellsCreekFireBrigade)
[RiddellsCreekFireBrigade](https://www.instagram.com/riddells_creek_cfa)
www.instagram.com/riddells_creek_cfa
www.cfa.vic.gov.au
 EMERGENCIES ONLY - 000

WALKING IN BARRM BIRRM

If you haven't walked through Barrm Birrm for a while, now is the time to go. The rain and relative warmth (bar snow!) have brought an early and excellent spring wildflower season. Go now and you'll be rewarded. Take a copy of the Macedon Range Flora book with you if you're in the mood for knowing what you're looking at! Available at the Riddells Creek Post Office.

Riddells Creek Landcare



NEWS FROM THE LIONS CLUB



It has been remarkable to see our Community being so diligent and patient with the restrictions, families and their pets out walking, taking in our beautiful village and supporting local shops and businesses.

We are thinking of our fellow Lions and families in metro areas. We would like to share with you over the coming Roundup editions a fun activity with thanks to the Taylors Lakes Lions Club initiative of an 'Isolation Survival Kit' newsletter, which is distributed through their local retirement villages and Lions Club families to break up their day and keep their minds thinking.

Whilst we have not been able to fundraise with our infamous BBQ sausage sessions, be assured we have sent out our annual Lions Christmas cake orders and shall soon prepare our Christmas Raffle as we lead up to December.

We are working toward some new local projects/improvements, and evaluating when we are in position to assist with the many request we do receive. Our Fundraising plays an integral role in what we can give back to our Community. Should you wish to hear more about our local Lions Club or take part in upcoming projects please phone our membership Chairman Ian Arnel 0411 437 167 / Secretary Steve Williams 54287320 / Narelle McGellin 0408558156.

We are excited about supporting the volunteers in the

Christmas in Riddells Creek group who are sure to sparkle up our main street for the month of December and to end the year off on a positive and vibrant note. Be sure to check out their sponsoring Tree options. We would love to see you involved in this colourful initiative.

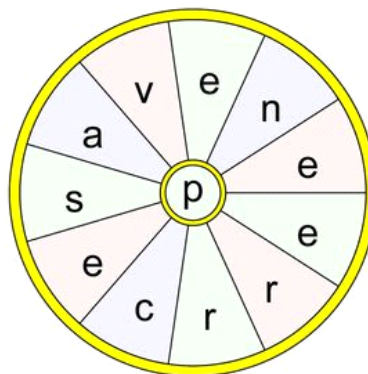
wordwheel puzzle

The goal of a word wheel puzzle is to create as many words possible with the letters in the word wheel. You can only use each letter once and every word must have the letter in the center of the wheel.

Can you find the 12 letter word?

Here is a little help to find the word:

this P word means you don't quit



The 12 letter word is:

.....
.....
.....
.....
.....

NW north western

PROPERTY VALUERS

Residential • Lifestyle • Commercial • Industrial • Rural

- Family Law
- Capital Gains Tax
- Rental Determination
- Superannuation Compliance
- Deceased Estates / Probate

**5A Station Street
Riddells Creek 3431**

P: 5429 1344

M: 0411 415 945

**E: nick@northwestern.net.au
www.northwestern.net.au**



Airport transfers
Work or social events
Weddings

Travel in luxury for taxi prices

Call Mark - 0407 146 204

www.distinguisheddrive.com.au



Riddells Creek Pharmacy

Professional Health Care, Service & Advice
Blackmore & Swisse Vitamins
Kodak Photo Kiosk
Natio, Max Factor & Sukin
Asthma Pumps, Blood Glucose & Blood Pressure Monitors

Open: Mon, Wed & Thur 9am-7pm
Tuesday & Friday 9am-6pm
Saturday 9am-1pm

**riddells creek
pharmacy**



**7 Station Street
Riddells Creek**

T: 5428 6622

F: 5428 7765



POWERED SERVICES

— ELECTRICAL CONTRACTOR —

REC 28638

FOR ALL YOUR GENERAL &
COMPLEX ELECTRICAL SOLUTIONS

DOMESTIC / COMMERCIAL

HEATING / COOLING INSTALL
& MAINTENANCE

ALL TYPES OF ELECTRICAL
SERVICING & MAINTENANCE

OBLIGATION FREE QUOTE

MICHAEL 0401 661 400

POWEREDSERVICES.COM.AU

RIDDELLS CREEK STOCKFEED

& SADDLERY

**NOW UNDER NEW
MANAGEMENT**

STOCKFEED
PET FOOD
SADDLERY
HORSE RUGS
VET &
SUPPLEMENTS

FULL DRIVEWAY SERVICE & DELIVERY

*We look forward to meeting you, please
drop in and say hello*

PH 03 5428 7001

82 MAIN ROAD, RIDDELLS CREEK 3431

rcstockfeed@inet.net.au

Your Ad Here

85% of readers
utilise the
services of
Riddell Roundup
advertisers!



MOTORCYCLES

Free pick up and delivery from Riddell
We Specialise in:

- On-site Roadworthy Certificates
- Factory Warranty Servicing
- Performance Enhancement
- Tyre Fitting all brands
- Repairs and Maintenance
- Dyno in store now

www.slipstreammotorcycles.com.au

Ph 9740 3100

**Unit 3 / 65 Horne Street Sunbury
Accident Repair Specialists**

Dromkeen

Gallery & Tearoom

Open Wednesday – Saturday

Morning/Afternoon Tea

& Light Lunches

10am - 5pm

Gallery, Tea Room and Con-
ference Facilities available

Bookings & Enquiries

0432 282 704

Smillie Appliance Servicing

Servicing Sunbury &
Macedon Ranges Area Daily

- Washing Machines
- Refrigeration
- Clothes Dryers
- Microwaves/Stoves
- Dishwasher

Mobile: 0414 355 409

YOUR LOCAL DENTIST



Advanced
DENTAL GROUP

**Emergency and Weekend
Appointments Available**



**Wisdom & Surgical Extractions Under Sleep
Dentistry and General Anaesthesia
at Kilmore Hospital**

We Bulk Bill under the Child Dental Benefit Schedule

Riddells Creek - 5428 7737

Wallan - 5783 4727

www.advanceddentalgroup.com.au

AROUND RIDDELL

Pictures, Art, Opinions, History, Updates and Tales from Around Town

OUR VILLAGE PEOPLE

Many of you will know Chris Clarke from her work with Charity's Secret (the op shop), St John's Anglican Church and other community activities. Today we ask how Chris and her family came to Riddells Creek?

On the 6th of September 1969, I and my family of Mum, Dad, sister Valerie and brother Michael set sail from Southampton on the Italian liner Achille Lauro bound for Melbourne, Australia.

We were, as we were to learn, £10 Poms and no offense was taken by this title. Other migrants heading to Australia on the Achille Lauro joined us on our way, including people from Malta, Genoa, Naples and Sicily. We stopped at Tenerife in the Canary Islands, Cape Town in South Africa then on to Fremantle WA, disembarking on the 13th October 1969 in Melbourne.

I still remember moments in that five week journey. In Malta we (my family) had a sightseeing trip in a horse and carriage, I remember everything was so bright, lots of white buildings everywhere. Dad had his wallet out ready to pay the carriage driver who looked at the notes and pointed, "yes that's how much." Thank you!

Somewhere during the trip we had, what I loosely call, lifeboat practice and gathered in the lounge, our designated assembly spot. There was pandemonium, the children blew the whistles on their life-jackets non stop, we couldn't hear any of the emergency instructions and we reckoned it didn't really matter as we'd be trampled to death in the rush to get to a lifeboat anyway!

When we docked in Naples, buses were available for those interested in a sightseeing trip and we took the opportunity to visit Pompeii, that was so interesting to see how quickly Mt. Vesuvius spread its lava and sadly how people died wherever they happened to be.

When we docked in Cape Town, South Africa, we hopped on a bus for a visit to the town and were stunned when the African people had to go to the back of the bus! We were further shocked by another incident that happened there. My dad went into a post office to buy stamps for postcards. He was told to leave because 'the white man's post office was next door'. It was horrible, an awful feeling and one never forgotten.

We were met in Fremantle by my mum's Uncle, he'd married

my grandmother's sister and they had migrated in the '20s. He took us on the train from Fremantle into Perth for the day, and after eating only Italian food for five weeks we enjoyed our Aussie lunch.

We sailed our last three day leg from Fremantle and arriving in Melbourne on a sunny day where we were met by another of mum's uncles and his wife when they came aboard to meet us, not the usual procedure but Uncle Jim had a contact in Customs. They were our sponsors and they, with their two youngest children, reorganized their home to take in five family members they didn't know. We were so grateful, migrants without support had to go to a migrant hostel. We stayed with them for a couple of months until Mum and Dad bought a house in Melton, just in time for our first Aussie Christmas.

As a young adult, I worked at Ansett Airlines, where I met my future husband, Don Clark. We were married in 1976 and lived in Windsor. Don and I drove through Riddells Creek that year and fell in love. We purchased a block of land, built our home and have been here ever since.

If you have an interesting story you would like to tell about how you came to live in our lovely town, the Riddell Roundup would love to hear from you. Email riddellroundup@gmail.com

1ST RIDDELLS CREEK SCOUT GROUP

We still may have not been able to meet face-to-face last term, but that hasn't stopped our small group of adventurous and creative youth and adult

members from thinking outside the box to find new ways of doing "traditional" scouting activities. We've managed to learn first aid, travel around the world, cook some cracking meals, learn about our ancestors, practice our knots and construction all online, so why not camping?

Our first ever virtual camp had a bit of everything with Cubs, Scouts and Venturers joining in for a weekend of camping in their backyard (or their loungeroom). Just like a real camp, the youth learned how to set up a campsite and were set a variety of challenges and activities to complete in a set time. They had to be creative, resourceful, improvise and be organized. While the leaders set the youth a lunchtime cooking task using set ingredients, each section set activities for all the youth to participate in. Challenges included attempting to travel as far as you could in an hour, which saw one Venturer ride his bike to Clarkefield and return(!), lighting a fire in a bucket of water in an attempt to burn a



piece of rope, making balloon powered cars, and attempting to make a paper structure to hold a person's weight. Our nighttime campfire activity included watching the satellite train pass over the sky and a game of virtual Pictionary before the youth spent time doing what they like best on camp: spending time socializing and playing games. The camp finished with the youth cooking breakfast for their dads and other special friends on Father's Day.

Scouts Victoria has also been a great resource during Term 3, extending opportunities for families and the wider community to get involved by hosting weekend online activities. There have been afternoon cooking sessions, learning magic from none other than Consentino, yoga classes and more.

Like everyone else, we are looking easing of restrictions and hopefully interactions as we move towards daylight savings. Whatever the coming we know our youth will continue to show can happen anywhere, any way.

Contact our Group Leader: Andrew
gl.1striddellscreek@scoutsvictoria.com.



Farewell Neil Doherty

As most of us will be aware, our local police officer Neil Doherty has retired.

Neil was a great help to the Riddells Creek Neighbourhood House during our Annual Street Festivals, and when he wasn't available he made sure we had the assistance of fellow officers.



Neil attended pre-festival meetings giving us the benefit of his knowledge and advice and we were very grateful to him for his help and community spirit.

On behalf of the staff and past Members of the Committee of Management we wish Neil and his family an enjoyable and relaxed future.



- Log Book Servicing
- Roadworthy Certificates
- Tyres & Repairs
- Wheel Alignment
- Mechanical Repairs
- Air Conditioning
- Courtesy Car Available

(03) 5428 7555

70 Main Road Riddells Creek VIC 3431



NEIGHBOURHOOD HOUSE

The heart and hub of the community

Notice of the Annual General Meeting of the Riddells Creek Neighbourhood House Inc. (RCNH)

7.00PM, MONDAY 19th OCT 2020 via ZOOM

Guest speaker - Nicole Battle, Chief Executive Officer, Neighbourhood Houses Victoria.

Due to the current COVID-19 pandemic, Consumer Affairs Victoria have advised that we cannot have the meeting in person so it will be held via Zoom.

All are welcome to attend, however, only RCNH members are entitled to vote.

RSVP to secretary@riddellscreeknh.com.au

You will be sent the Zoom meeting link including instructions if you are new to Zoom, together with the formal Notice, Agenda and other relevant information.

Kristine Rawlinson

President

Riddells Creek Neighbourhood House Inc.

NEWS FROM THE HOUSE

As September drew to a close, we were fortunate to feel the easing of restrictions in regional Victoria, just in time for school holidays and the change of seasons!

Although these changes still see some of us working from home, we will see a lot of businesses and venues reopening, including:

- schools and childcare
- retail and hospitality, with conditions
- outdoor sports/ exercise (up to 10 people)
- travel - within regional Victoria.

We should congratulate each other on working together and doing what was needed during very strange and difficult

times.

Whether you have decided to stay local or travel a little, we hope you are enjoying the sunshine, and the amazing abundance of simple pleasures that this area has to offer.



Wherever possible, be mindful of the businesses and owners that are reopening. Let's support each other in whatever way we can.

MASKS

Remember that wearing a mask is still a requirement.

As part of the state government's Community Connector Project, the Macedon Ranges Shire Council have delivered a number of reusable face masks to support those that are most vulnerable throughout our community. If you or anyone you know of is in need of a reusable mask, please contact the Neighbourhood House to arrange collection.

If you are struggling or just need someone to talk to, that is OK, please reach out for support. You can always ring us at the House and we will try to assist. As a Neighbourhood House, our role is to support our community. The Board, staff and volunteers are committed to ensuring that we have a healthy, thriving, connected community.

SPOONSVILLE

Spoonville - A village of colourful characters created by locals, has arrived in Riddells Creek!

Join in the fun and add to our growing village - located just inside the gates of the Neighbourhood House, alongside the fairy garden.

Please create your own character, whether you're 2 or 102! We'd love to see how much creativity we have in our community. This is a lovely way to lift each other's spirits. Please keep in mind that we want to keep our community and our planet beautiful when you design your contribution.

Feel free to bring a cuppa and take a seat in a lovely garden while you're visiting the residents of Spoonville.

ONLINE

We will continue to offer a range of online classes and workshops in term 4. For more information on these, please keep an eye on our website, Facebook page and the noticeboard out the front of the House.

DO YOU HAVE A TIP, TRICK OR HOBBY YOU'D LIKE TO SHARE?

Have you found yourself doing something you have not done for a very long time, because somehow now we have the time to do it? Have you picked up a new hobby or learnt something new? Have you been doing more in your garden or going for more walks? Are you looking for something fulfilling to do that can give back to our community?

Have you thought about sharing your talent, hobby or volunteering? Riddells Creek Neighbourhood House is looking for people who are keen to share their crafts, hobbies or DIY jobs online. A few examples may be how to brew the perfect cup of tea, make a simple scarf, cook the perfect BBQ, prune the lemon tree, etc. We are looking for people

Riddells Creek Neighbourhood House
59 Main Road, Riddells Creek, Victoria 3431
Phone: 5428 7836
info@riddellscreeknh.com.au
www.riddellscreeknh.com.au
ABN: 26 147 917 519

LOCAL PODCAST 'THE COVID CROSSING' FUNDED FOR A SECOND SEASON

The locally focussed variety podcast 'The Covid Crossing' has been successful in obtaining a grant from the Macedon Ranges Shire Council for another six episodes.

The podcast is a heart-warming and thought provoking mix of stories, local interviews, conversations, wellbeing and equality ideas.

"It has been very satisfying to know that people are enjoying the podcast, it's helping them feel more connected, and they are using the wellbeing ideas too." said Kate Lawrence, the producer of the series. "And I am thrilled to be able to make

who may wish to do a small video of tips and tricks to share with other people in the community. If this is you, please contact us.

We cannot wait until the House is open and we can see you all face to face!

Carol and Celia

love 
your community



another season, and this time focus on other areas of the Shire".

The podcast has received some excellent reviews, like this one on itunes from Cookie Dough Bites: 'Kate has woven stories, interviews and poems into a heart-warming, thoughtful podcast. As part of this community I feel fortunate to listen to these connecting threads.'

Planning for the next season of six episodes has begun and if you have any ideas you'd like to see in the podcast, you can contact Kate on kate@storyground.com.au. The new season will launch in September.

As we continue to deal with the virus and its impacts, the podcast remains great listening and is available free wherever you get your podcasts or listen online at <https://storyground.com.au/the-covid-crossing>



The Covid Crossing

*A podcast of art, heart, hope and happenings,
from the Macedon Ranges, north west of Melbourne.*

LEARN TO
dance

*Classes in Classical Ballet, Tap, Jazz,
Contemporary, Hip Hop, Acrobatics, Singing
& Preschool Dance.*

AGES 3 TO ADULT

Phone Cassie McTaggart
0439 413 222

 **RIDDELLS CREEK
DANCE SCHOOL**


**NOLAN
BUILDS**
0437 682 442

- New Homes
- Extensions
- Renovations
- Decks
- Pergolas
- Windows/Doors
- All building and carpentry needs

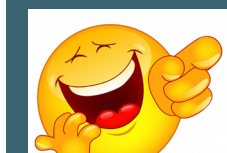
Call James for a free quote today
0437 682 442

 Nolan Builds
 @nolan_builds

JOHN HABER
Grass Slashing, Mowing,
Fire Breaks & Contract
Hay Baling
Fully Insured & Workcover
Approved
Heavy Tilt Tray Services

- For Transporting Machinery, Containers, Vehicles, Site Sheds, etc.
- 9m Tilt and Slide Tray with an additional 6m trailer
- Interstate Specialist

T: 5428 7166
M: 0427 058 164
ABN 80 453 590 902

JOKE OF THE MONTH

Q. What happens to a frog's car when it breaks down?


A. It gets toad away.

Langley | McKimmie
Chartered Accountants

- Business Advisory
- Accounting and Taxation Services
- Superannuation
- Audit and Assurance
- Bookkeeping Services
- Corporate and Administrative Services

17 Nicholson Street, Woodend
T: 03 5427 8100
E: info@lmck.com.au
www.langleymckimmie.com.au


**J.B.
Painting &
Decorating**
Interior &
Exterior
Domestic &
Commercial
30 years
experience
Free Quotes
Phone - John
0412 540 789
5428 7542


**gisbornemedical
CENTRE**
general practice
of the year
16 BRANTOME STREET
GISBORNE 3437
PH: 03 5428 3355
www.gisbornemedical.com.au

Sacred Heart College Kyneton



Sacred Heart College Kyneton is a Catholic Secondary school where students thrive in a vibrant learning and caring community.

Interested in discovering more about life at Sacred Heart College and the learning pathways on offer? Our Principal, Dr Darren Egberts, invites prospective parents and students to participate in one of our Virtual Conversations via Zoom.

When: 14 & 28 October commencing at 9:30am

How: Register using the online booking form on the Tours page of the College website. A Zoom link will be sent by email.

Enrolments for Year 7, 2022 close on 5 October.

Limited places available for Years 8 - 12, 2021.

Contact our Registrar for enrolment enquiries: T: 5421 1238
E: dlawrence@shckyneton.catholic.edu.au W: www.shckyneton.catholic.edu.au

A Ministry of Mercy Education Limited - ABN 69 154 531 870



SUSTAINABILITY + ENVIRONMENT

Taking care of our local environment

CLIMATE CHANGE AND THE HORSE PROPERTY

When: Saturday, 3rd October 2020, 11.00am

Where: Online event, register at www.eventbrite.com.au/e/climate-change-and-the-horse-property-annemaree-docking-of-plan-it-rural-tickets-121316195005

Upper Campaspe Landcare Network is proud and excited to bring you this two part webinar series – Climate Change and the Horse Property with Annemaree Docking of Plan it Rural.

Join Annemaree over two consecutive Saturdays from 11.00am on the 3rd and 10th October online via Zoom as she delves into the steps you can take to create resilience on your horse property.

During her two webinars and through the conversations that follow, Annemaree will discuss:

- methane production and manure management
- soil management to retain carbon, soil structure and increase productivity
- carbon stocks, vegetation sinks and biodiversity management
- efficiency of farm operations and reducing dependency on external inputs
- choosing and maintaining farm equipment, and property design for an effective, functional system

These workshops are being delivered with the support of Macedon Ranges Shire Council.



AT THE FOOT OF THE STAIRS

At the foot of the stairs, on the way to the shed, or taking something out to the car, I step into a scent that's spicy, warm, transporting. A cloud of memory. The boronia is flowering. It's the first flowering since I planted it here on the east side of the house near the back steps, where I figured it would get enough sun, but not too much, and I could keep it damp, because boronia comes from the wet forests of Noongah country, in the damp south of the south west of Western Australia.

Alice is delighted: that's where she lived her first four years. When I moved to Perth in 1975, the men from the south still arrived in Hay Street Mall in Spring, their buckets full of dark brown boronia, selling to the city people. That heady scent was a sign that the cold time was passing and the hot time was coming.

Alice went looking for the Noongah word for boronia. She didn't find a direct translation but she did learn that for people of the south, boronia was a marker for the arrival of the season known as camberang. The other markers are baby swans, and dugites and tiger snakes out in the sunshine but still dozy from winter, so take it easy, hey?

Here in Riddell, what are our markers for Springtime?

- It's the time of rain and sunshine.
- The time of wearing only two layers sometimes, and of the appearance of bare arms.
- The time of the dawn chorus of symphonic proportions.
- The time of the swooping magpie and the grunting koala.
- The time when you look to the hills and wonder what summer will bring this year.

But I wasn't going to be gloomy. The scent of the boronia is a wonder, and to have it at the back door, a joy. Bring on those sunny days!

Ross Colliver Riddells Creek Landcare



THIS MONTH IN MY GARDEN

Spring is the season of yellow. But it's not just the wattles and daffodils that add touches of sunshine to the garden! In my garden I enjoy a succession of yellow flowering plants throughout spring. In full bloom right about now is Mahonia (or Berberis) aquifolium. Known as the Oregon grape this bushy evergreen with prickly holly-like leaves is extremely hardy and is covered in balls of small yellow flowers in spring. These are followed by blue-black fruits adding another season of interest to the plant. Also in full bloom about now is Forsythia suspensa a small deciduous shrub that flowers before the leaves appear, so the spindly branches appear to be completely clothed in gold. Similarly, coming into bloom about now is the national flower of New Zealand, the kowhai. This can be either Sophora tetraptera or Sophora microphylla and both are small trees with gorgeous fern-like foliage. The flowers are pea-like and hang in large bunches and the wattlebirds and New Holland Honeyeaters go crazy for them.

In my tiny vegetable garden in polystyrene boxes, I am harvesting the coriander and lettuces and giving the garlic one last application of blood and bone watered in well. The rapidly emptying boxes are being prepared for the summer vegetables. I recently acquired one very large box which will grow just one tomato beautifully. I am also preparing my herb box that traditionally sits near the kitchen – parsley, chives, mint and whatever takes my fancy like oregano or thyme. I have been given some interesting seeds like slow bolt coriander and Mrs Burns lemon basil and Ruby Streaks Chinese mustard that I am keen to try. I always like to try out new varieties and having my little propagating unit back up and running means I actually have somewhere to sow them!



Pictured: Kowhai

OUR VIALAGE PEOPLE

FROM BEACH TO CREEK

When Erica and I drove through Riddells Creek for the first time in 2017, Erica said 'this looks like a lovely town, close to the airport, an hour from Melbourne and surrounded by farmland. Let's move here!'

We were living in Manly at the time. Our apartment was close to North Head, with panoramic views over the harbour on one side and the Pacific on the other. Our offices were down the hill. All our staff were from the Northern Beaches. Why move?

Erica grew up in Bordertown, on a small sheep farm. 25 years of apartment living in Sydney had lost its novelty and she had a hankering for some land, a big sky and some country quiet. We travelled a lot for work so proximity to an airport was critical. That ruled out Sydney, but the Macedon Ranges was, well, perfect. Riddells Creek ticked all the proverbial boxes.

We spent a weekend looking at places, and the following week we bought our 2.5-acre oasis, at the end of Dwyers Court, Riddells Creek. Compared to Sydney prices, we felt we scored the bargain of the century. Running our business remotely was our big concern. Could it be done? Would our staff manage without us? Were we risking our future?

Over these last three years we have grown to love our adopted town. We have met our neighbours! This never happened in Sydney. Shop keepers recognise us and we are greeted by name. This never happened in Sydney. We have a farmer's market we can walk to once a month. Not in Sydney. We have kangaroos in our garden. You get the picture.

We loved the fact that the airport was only 25 minutes away. It took longer to drive from Manly to Sydney airport, than it took to fly from Sydney to Melbourne.

Then COVID-19 hit. We have not been on a plane since March 20th. Our entire business is now run online. And we have kept every employee despite the early stage drama.

But, best of all, we are in Riddells Creek. This has been the best move of our lives.

James (Local resident)

CONTROL SERRATED TUSsock BEFORE SEEDING

Now is the ideal time to check your property for the noxious weed serrated tussock (*Nassella trichotoma*). The recent rains and warm start to spring in some parts of Victoria has been good for pastures and crops, but unfortunately, also good for the growth of serrated tussock. Controlling serrated tussock before the plant goes to seed is critical to prevent

further spread, lost productivity and increased control requirements.

"Before seeding, serrated tussock has a lime green appearance. When seeding the flowerheads have a distinctive purple colour developing as the seeds ripen in late spring and early summer. These features help serrated tussock stand out from the native tussock grasses," Victorian Serrated Tussock Working Party Chairperson Lance Jennison said.

The VSTWP has developed an online video and information sheet to help landowners identify the unwanted grass, at <http://www.serratedtussock.com/how-identify-serrated-tussock>

"Serrated tussock has a fine leaf and will roll smoothly between the index finger and thumb, while native tussocks feel as though they have flat edges," Mr Jennison said. "The leaves also feel rough when you run your fingers downwards due to fine serrations," he said. "A mature serrated tussock plant can produce thousands of seeds in a season, blowing up to 20 kilometres from the parent plant."

Before they flower and seed, serrated tussock plants can be controlled with a registered herbicide, manual removal or cultivation. "Having a healthy pasture and competitive ground cover is one of the most important aspects to weed management. Serrated tussock is a prime example of a weed that does not like competition and well established pastures," Mr Jennison said.

It's estimated that serrated tussock now covers more than 250,000 hectares of land in Victoria. Treating plants prior to seeding is vital to prevent further spread across Victoria and impacts on our agricultural and environmental assets. It is best to control serrated tussock before it gets out of control. Large infestations require ongoing management and the integration of a number of control techniques, which can cost large sums of money and time.

The VSTWP recently commissioned case studies on the economic costs of not treating serrated tussock, which concluded that if serrated tussock is left to infest a property or landscape, the cost of controlling it will be at least five times higher than if it was prevented in the first instance. This is a massive cost saving and an important message to deliver to landowners who have untreated plants on their property.

For further information, please visit www.serratedtussock.com, or contact the VSTWP on info@serratedtussock.com



Riddells Creek Farmers Market Annual General Meeting

5th October
2020



The Riddells Creek Farmers Market is a non-profit incorporated association run by a small committee of volunteers. The main objectives of the RCFM are:

- to run a community focussed market to support local farmers and producers
- to provide our community with a fun regular event where they can buy local produce and catch up with friends and neighbours from across the region
- to raise funds for the Riddells Creek Primary school and other community initiatives.

The RCFM has only been incorporated for a year, and was formerly supported by the Riddells Creek Neighbourhood house (Thanks RCNH!!). This year the RCFM has donated \$3000 to the Riddells Creek Primary School for their ongoing playground shade project and we look forward to supporting the school for many years to come.

Thank you to the people of Riddells Creek for supporting our market over many years and especially this year with the COVID-19 challenge we all face. Our committee has been unanimous in keeping the market open to support local businesses and jobs as well as providing one of the few community based activities that can still continue during lock down. We follow government health guidelines and have been well supported by our local police - so we have been able to run the market safely and we will continue to do so.

RCFM AGM

The RCFM is holding its first Annual General Meeting at 7.00 pm Monday 5th October by a tele-meeting. We would like to invite anyone interested in the RCFM to attend this meeting and maybe consider joining the farmers market as a member. At the meeting members will be voting for the RCFM committee (President, Secretary, Treasurer and committee members). If you wish to attend the AGM please email us at riddellscreekFM@gmail.com and we will send you a link for the tele-meeting.

Lachlan Milne, Secretary, RCFM

HOW WILL YOU VOTE IN THE MACEDON RANGES SHIRE COUNCIL ELECTIONS?

The Forum for Democratic Renewal is a group of citizens in the Macedon Ranges who think that residents and Council should and can talk a lot more closely about decisions the Council is making.

Here in Riddell, last year, we insisted on early consultation on a proposal for 1,290 housing lots on the Amess Road urban growth area. And in July this year, after numerous submissions from the Riddells Creek community, we won funding for a Riddells Creek Movement Network Study (Stage 1 - \$60,000) that will inform planning for traffic and pedestrian movement in the town. An application for an extension of time to the permit to build a much-contested supermarket complex in the town centre was rejected at the May 2020 Council meeting. But all three of these decisions by Councillors came only after residents spoke up and said what they wanted, in opposition to the plans or proposals that had been put to Council for decision.

Councillors should be our front line, protecting community interests and deciding when there must be closer collaboration with residents. With developments pencilled in all over the Macedon Ranges Shire, who you choose on the ballot will influence the extent to which developer interests are balanced by community interests, and whether steps are taken to combat ecological and climate impacts.

The Forum for Democratic Renewal is conducting its own assessment of the merits of each of the candidates in the upcoming council elections. We believe this Shire needs councillors who will stand with their local community to preserve the character of our towns and the Macedon Ranges in the face of intense pressure from the State government and from developers.

We will be asking each new candidate specific questions about their approach (see or search for [Traffic Light Election Campaign](#)). For current councillors seeking re-election, we will ask about issues affecting local communities that have been on the Council agenda over the last four years.

The election will be conducted by post. Look out for our Traffic Light leaflet in your letterbox before you fill in the ballot paper.



Pictured above: Riddell promenade

Pictured below: Riddell development



ADVERTISEMENT

VOTE ONE

Annette Death

FOR EAST WARD

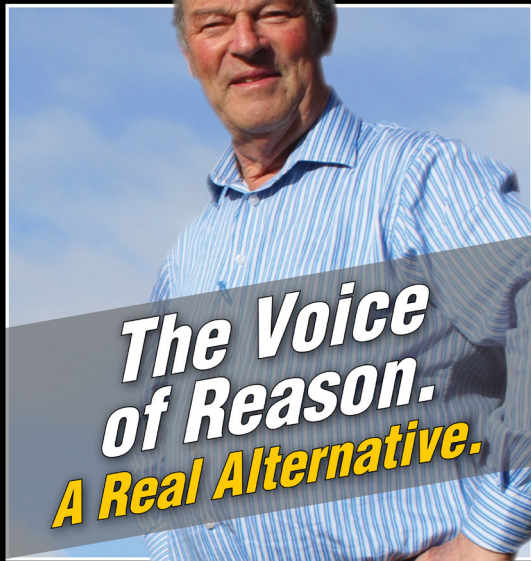
As a councillor, I will:

- ensure a fair go for local businesses, clubs and sporting facilities in East Ward
- work with residents to implement thoughtful development to ensure adequate infrastructure, including roads and footpaths for our families
- support and deliver our maternal health and early childhood services for families
- oppose cuts to the services that our community relies on.

Authorised by A. Death, PO Box 90, Gisborne Victoria 3437

PROTECTING THE GOOD LIFE IN EAST WARD annettedeathforeastward@gmail.com 0411 479 787

BILL WEST



**The Voice
of Reason.
A Real Alternative.**

VOTE 1 EAST WARD

Authorised by: Cherie Goodson — 42 Main Road Lancefield

ADVERTISEMENT

Vote **1** Natasha Gayfer

Re-elect to Macedon Ranges
Shire Council - East Ward

Experience ~ Leadership ~ Community



0491 817 268 • natasha4eastward@gmail.com

Authorised by N Gayfer PO Box 283 Woodend 3442

VOTE 1 – GEOFF NEIL

If you have had contact with the Shire recently, you would be aware of the staff upheaval that has occurred, culminating in the resignation of the CEO.

Over the last 2 years, the Shire has 'let go' a significant amount of experienced staff. All this has been allowed to happen during the watch of the current group of Councillors.



Now is the time to put stability back in the Shire. Now is the time to make Council accessible and improve communication with the community.

Now is the time for the Shire to re-connect with small business and engage with local tradespeople rather than contracting services outside the Shire.

Now is the time for the community to be treated as an integral part of Council processes. Now is the time to ensure Council facilities and services have the capacity to grow alongside population increases.

When it comes to town planning, let us ensure there is meaningful consultation. Now is the time to give East Ward a loud voice.

Protect your home - Check your ORG!

(Overflow Relief Gully)

Your overflow relief gully should be raised and clear.



Find out more at
westernwater.com.au/org



KIDS FUN PAGE

Puzzles, riddles and fun!

RIDDLES TO STRETCH YOUR BRAIN...

1. Which word becomes shorter when you add 2 letters to it?
2. What's the capital of France?
3. How many months of the year have 28 days?
4. Kate's mother has three children: Snap, Crackle and ___?
5. When Grant was 8, his brother was half his age. Now, Grant is 14. How old is his brother?

3s5a1f9e8t2y6

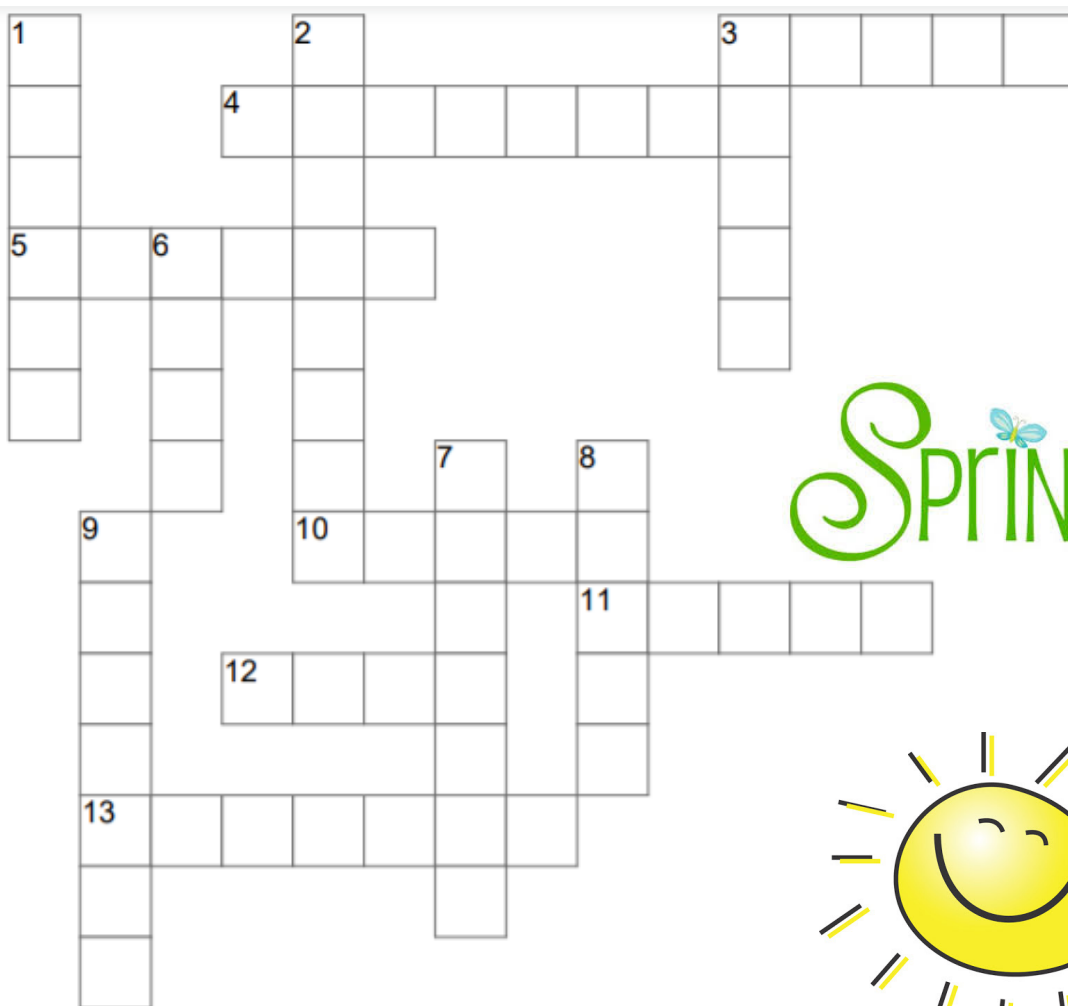

AID AID AID

hed

- 1.
2. blame
3. blame

Answers on page 20





SPRING



ACROSS

3. Buried in the ground, sprouts in the spring.
4. Bright yellow spring flowers.
5. The season that follows winter.
10. Spring flowers, famous in Holland.
11. A type of bird seen in spring.
12. Before turning into a flower.
13. Occurs in the spring and in the fall.

DOWN

1. There are four of these each year.
2. An item of clothing worn in rain.
3. What happens when buds open.
6. A form of precipitation.
7. To produce flowers.
8. The fourth month of the year.
9. Another word for rain.



Macedon Ranges Family Law

03 5428 8711

"Local Lawyers helping local families
rebuild their lives"

FAMILY LAW

Parenting, Child Support, Divorce, Property Settlement,
Family Violence

WILLS & ESTATES

Wills, Powers of Attorney, Probate, Survivorship

Contact our office to arrange a consultation today.
www.macedonrangesfamilylaw.com.au



CIRC - CHRISTMAS IN RIDDELLS CREEK

Proudly auspiced by the Lions Club of Riddells Creek

It's getting close to Christmas Riddells Creek!

We at CiRC have been busy planning and getting organised for our 3rd year of making Riddells Creek look festive. Did you see our flyer in last month's Roundup?

We know it's been a tough year and we are heartened by some new sponsors and some old sponsors upgrading to a larger tree. We still have trees available for sponsorship but we must close applications for this year on the 25th October.

If you would like to participate but don't want to sponsor a tree, we are happy to accept donations of smaller amounts. We use these funds for decorations, lights and prizes.

A resident has suggested we put a tree at the cemetery and has offered a donation to kick off the sponsorship. If you are interested in donating to the cemetery tree please get in touch.

You may have some other wonderful ideas or would like to help, give us a call or email. Let the countdown begin.

Desley Adams (the Christmas tree lady)
0419 286 586 / christmasrc3431@gmail.com

KIDS FUN PAGE ANSWERS

1. The word "short."
2. The letter "F." It's the only capital letter in France.
3. All of them! Every month has *at least* 28 days.
4. Kate! It's Kate's mother, after all.
5. His brother is 10. Half of 8 is 4, so Grant's brother is 4 years younger. This means when Grant is 14, his brother is still 4 years younger, so he's 10.

REBUS PUZZLES

Safety in numbers

First Aid

Red head

No one to blame



RIDDELLS CREEK SEWER STORAGES NEARING COMPLETION

Construction is nearing completion on underground storage tanks for Riddells Creek's two sewer pump stations to cater for the needs of the growing population.

Western Water currently provides sewerage services for close to 1000 properties in Riddells Creek. In the past year, around 191 million litres of sewage collected was pumped through the Hamilton Street and Sutherlands Road sewer pump stations to be treated at the Riddells Creek Recycled Water Plant, east of town.

Western Water's Chief Operating Officer, Graham Holt, said "these new sewer pump station storages are important infrastructure for Riddells Creek".

"Up until recently, Riddells Creek's pump stations have been sufficient to manage the town's sewage flows. However, population growth is increasing the amount of sewage being produced. Creating an emergency storage at each pump station will minimise the risk of sewer spills, particularly during high rainfall events, protecting both the community and the local environment".

Construction on the \$1.5m sewage pump station storages began in April and is expected to be finished by the end of October.

Mr Holt says that further projects are being planned to ensure Riddells Creek's sewerage services meet the needs of the growing population.

"Planning is also underway to upgrade the sewer pipe that runs between the two pump stations and the Riddells Creek Recycled Water Plant to accommodate increased sewage volumes."

The sewer pipe upgrade is expected to begin construction in the second half of 2021.

Western Water will invest around \$100 million in capital works across its service region over the coming year to maintain its current network and address the needs of growing customer numbers.

Workers on outdoor sites are adhering to all safety and hygiene guidelines, in line with Victorian Government public health measures. For more information, visit WesternWater.com.au.

MEET A LOCAL FEATHERED FRIEND - THE GANG-GANG COCKATOO

The Gang-gang Cockatoo is a small cockatoo that can be seen around Riddells Creek. The male displaying a very distinctive scarlet head and crest. Like many female birds, the female gang-gang is a duller grey colour. Gang-gangs have the nicknames Red-headed Cockatoo and Red-crowned Cockatoo.

Gang-gangs spend most of their day feeding in trees such as sheoaks (casuarinas), eucalypts, and wattles. Gang-gang



Cockatoos are about 33-36 cm long, which is small for a cockatoo. They move to higher elevations to breed during the summer, preferring heavily timbered and mature wet sclerophyll forests to build their homes.

Gang-gang Cockatoos communicate in an 'er-eck' or a 'gr-raer-iriek!' sound. These calls have been likened to the drawn out sounds of a cork being removed from a bottle, and a rusty hinge on a gate.

- Gang-gang Cockatoos love: Eating sawfly larvae. They are one of the few birds who enjoy eating these insects, and will eat large quantities at once.
- Gnawing on branches and the entrances of tree hollows to sharpen their beaks.
- Their nest hollows. They usually return to the same nest hollow year after year to raise their family.
- Grown softly while eating. This just means the Gang-gang Cockatoo is very content while eating.
- Allow you to walk close enough to be able to touch them. They're calm and social birds, and human company doesn't bother them.
- Leave their chicks in a creche in a tree with many other Gang-gang youngsters. When parents go looking for food, often their babies will roost together in the same tree.



RIDDELLS CREEK PRIMARY SCHOOL

THANK YOU

To our students: Thank you for your resilience and incredible coping skills. You are inspiring little humans and have kept us adults laughing even though sometimes you've driven us crazy! I speak for all of us when I say that we are incredibly proud of every single one of you. These are new times for all of us and you have proven, yet again, that adults can always learn from children.

To every adult in our school community: Thank you for the way you have supported our kids, our school and each other. You have approached this year with kindness in your hearts and thoughtfulness for Riddells Creek. Every little act of care kept the team working. I appreciate you all.

Congratulations to you all for surviving Remote and Flexible Learning 2.0! Until next time,

Emma Brooksby
Principal

BEST VIRTUAL CAMP NIGHT EVER!

Lockdown may have prevented our Grade 5/6s from going on camp last term, but instead they enjoyed a 'virtual' camp live from their forts/tents/cubby houses. Our night-time meetings involved lots of sugar, games and fabulous fun!

Their spider cooking creations were inspired from the chapter 'Tarantulas' in our much-loved book, 'The Explorer'.



Prep Enrolment Tours 2020

(for preps starting 2021)

**Virtual tours - refer to our website
to have a look!**

Note: COVID-19 restrictions mean access to the school is restricted. At this stage, the following tours are scheduled, however this will be dependent on the restrictions at that time. Please refer to our website to keep up to date.



Term 4 2020

Monday October 26th 2020 at 9.30am

Monday October 26th 2020 at 2.30pm

Monday November 23rd 2020 at 9.30am

Bookings required, contact the school 5428 7277 or email riddells.creek.ps@edumail.vic.gov.au

Please refer to school website for enrolment requirements.

On arrival come to front office first to sign in.

Closing date for 2021 enrolment applications is

Friday 11th September 2020.

Riddells Creek Primary School
step up and step out for success

Riddells Creek PS Prep 2021!

PREP TRANSITION DATES

MONDAY 9TH, 16TH, 23RD & 30TH NOVEMBER 2020

PLEASE CONTACT SCHOOL OFFICE VIA EMAIL FOR
ENROLMENT ENQUIRIES. ALTERNATIVELY, PLEASE CHAT TO
YOUR KINDY.

KINDY & SCHOOL STUDENT VISITS WILL OCCUR IN TERM 3
(SUBJECT TO DEPARTMENT RULING).
SCHOOL TOURS TO RECOMMENCE ONCE RESTRICTIONS
ARE LIFTED.

EMAIL: riddells.creek.ps@edumail.vic.gov.au



LOOK WHAT OUR PREPS HAVE MADE!

Our lovely Grade Prep students have been busy making their own animal habitats.

WHAT DID OUR ONSITE STUDENTS GET UP TO?

Using funds awarded to the school to provide 'A Home Among the Gum Trees' for native animals, an order was placed for a collection of nesting boxes for a range of species found in our area.

A pallet of nesting boxes arrived (as flat packs!) and the students worked together to assemble a total of 43 nest boxes.

We now have bird boxes suitable for tiny pardalotes, plus our beautiful rainbow lorikeets and rosellas, all the way to kookaburras and boobook owls. Our mammal boxes may provide homes for ringtails and brushtails.

The boxes will be painted (in colours that will help them to blend in) and will then be placed in their 'homes for the homes'.

With the remaining funds from the grant, indigenous plant species will be bought to further add to our school environment.



WHAT HAS BEEN HAPPENING IN BU3?

The BU3 students have been busy looking for materials to build their animal habitat models for the amazing animal research project. They have been very crafty!

HEALTH & WELLBEING

Caring for our Community

CALLING ALL KIDS IN THE MACEDON RANGES!

For National Nutrition Week (12-19 October) Cobaw Community Health invites kids in the Macedon Ranges to create their very own animal made from healthy fruit and vegetables. Send us a photo of your child's creation along with their name and age and the top photos will be shared on our social media pages during National Nutrition Week. A fruit and veg box from the Macedon Ranges Farmers Market Online will be awarded to the animal photo judged the most creative. The recent Active Living Census found that only 25% of children under 12 and 14% of adults in the Macedon Ranges meet the national daily vegetable consumption guidelines. This is a fun and creative way for the whole family to increase their daily serves of fruit and veg. Submit your entry to jenny.cowan@cobaw.org.au by 5pm on Thursday 8th October.

RIDDELL COUNTRY PRACTICE ARTICLE

Thanks to everyone in our community and the wider regional areas for following COVID-19 restrictions and helping get to the low case numbers that allowed restrictions to ease. Along with the warmer weather, this has helped lighten the mood for many despite the ongoing challenges.

Remember to continue to wash hands and use sanitiser, wear masks when in public and physically distance to minimise the risk for further outbreaks.

Are you still working from home? Does your home office set-up prevent or contribute to neck and back issues?

Back pain is a pain!

There are many causes, only some are serious, BUT the majority do get better. Analysis, as always with medicine, involves a thorough history followed by a targeted examination and depending on the concerns some xrays and/ or scans may be helpful in diagnosis and management.

The GP or therapist, will say "tell me about the pain", from when and where it started, the quality, severity and radiation (does it go anywhere, like down the leg) as well as any aggravating or relieving factors, (like bending or extending). These features can help work out if its bony, facet joint or disc type location, or if its severe shooting or tingling, more a neuralgia or nerve type pain.

Examination includes palpation or feeling the area, after testing range of movement, and power and reflexes.

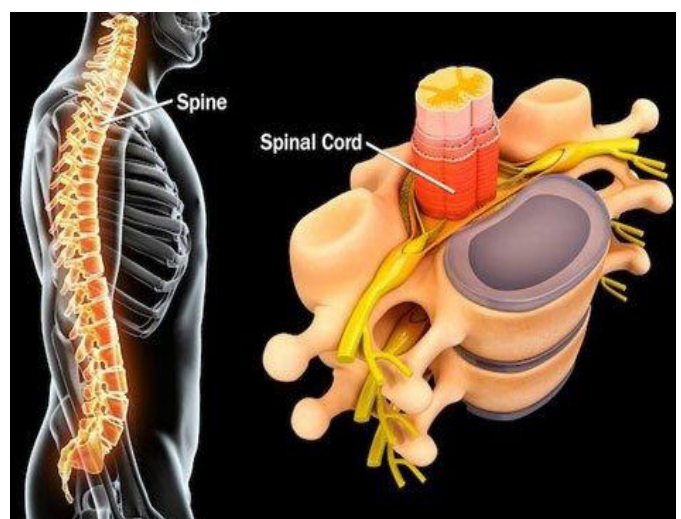
Therapy is generally conservative with reviewing habitual posture issues, exercise prescription, stretching,



strengthening, to aim for flexibility and core strength, with yoga or pilates approaches popular and effective in the longer term.

Medication is sometimes needed for flare ups and to enable the exercises to be continued. Scans are saved for the cases which are not improving, where the symptoms are severe or there are signs indicating weakness, nerve or bone injury. Targeted injections or nerve blocks and less frequently surgical decompression may be considered.

Dr Ken Baddeley RCP 5428 7591





“Think about who you love, then think about them in ICU.”

For Sarah, who's been battling coronavirus for nearly 8 weeks, being separated from her two little boys, has been heartwrenching. On top of coronavirus attacking every one of her body systems, intense pain and acute breathing difficulty, she still has no idea when she will be well enough to see her boys. Sarah's hope is that by us all doing the right thing, no one else will have to experience the heartache her family has.

Please, play your part and help stop the spread of the virus. If you have symptoms - please get tested. Payments of \$450 are available to help you stay home and wait for your test result.

**STAYING
APART | KEEPS
US | TOGETHER**

**To learn more of Sarah's story go to
vic.gov.au/CORONAVIRUS**

Authorised and published by the Victorian Government, 1 Treasury Place, Melbourne



SPORTS

Celebrating our local sports clubs and teams

RCJMBA NEWS

LET'S MEET A FEW OF THE TEAM!

Benny has been with us for four years, while Jake earned his stripes three years ago. Max has two and a half years-experience and Lily had just started in the 'green shirt' (training ref) last March. They all agree that reffing lets them see the game from another angle and develop their own game. Benny captured our ref team culture well: 'any time I'm in a basketball stadium I can't help but enjoy myself!'

'We pride ourselves on developing young, first time referees, providing opportunities for our kids to pursue new skills within the basketball environment,' explains Jo Poyser, Ref Coordinator since 2017.

The team love helping kids learn and develop their game. They also love those amazing, memorable moments – like the Summer 2017 GF that went into triple overtime! Benny was reffing with his brother, as Jake recalls: 'I was on the score bench flabbergasted, reading through the By-Laws trying to figure out how we will get a winner!'

Jo recalls that '...everyone was spent at game's end!'

The big games definitely leave their impression. Max says his 'best reffing memory would be my first grand-final at the RCJMBA in U13s – the crowd and atmosphere was amazing and it was so good to be part of that!'

Lily summed up the teams' feeling about their favourite



aspect of being part of the RCJMBA. 'I love the environment within the RCJMBA family, everyone is always helping and supporting the people around them.'

In their downtime away from the court, our team love to hang out with friends and family, eat, sleep and watch Netflix. You know the other common answer to what they do in their free time? Play basketball!



FLY FISHING WESTERN VICTORIAN LAKES

Bruce Smith, Eminent Fly Fisherman, Fly Tyer, Photographer, Writer, Nature Lover, Fly Fishing Video Blogger (In Nature's Realm – Bruce Smith) and Life member of Calder Fly Fishing Association, recently gave an extensive Zoom presentation to members and invitees on fly fishing Western Victorian lakes. The session was made available to the public attracting 93 attendees.

He covered the 13 more familiar lakes and reservoirs that ranged from the Coliban Lakes system and the Newlyn and Hepburn Reservoirs, through to Wendouree and Cosgrove, and as far as Cairn Curran and the nearby Loddon River. He also made quick reference to a few lesser used waters worth trying.

Using satellite imagery, he indicated useful access points to the most likely locations of fish, particularly those associated with 'structure'. He pointed out weed beds and trees as well as stream entrances, coves, including an underwater old river course at Newlyn that may provide access to or a suitable cover for lurking or feeding trout.

Bruce included a description of the various aquatic life that could be expected to seasonally frequent the lakes such as nymphs and mud-eyes, and flying insects and bugs that

provide food for trout. He gave of his fly fishing advice including some suitable flies to use.

During the presentation participants were able to discuss their own experiences of the various waters and provided additional useful input. An entertaining and rewarding presentation.

If you'd like to know more about the Calder Fly Fishing Association please visit calderflyfishing.com.au/

ROMSEY GOLF CLUB

After weeks of cold, wet weather, the first few days of September saw some sunny, windy days. These extended into over a week and the course began to dry out. It looked like we could finally begin our drainage, levelling and filling works. Representatives from RGC again met with New Earth Constructions on September 8th to decide what works could be attempted before the forecast rain of the weekend. The most pressing areas were the 4th, 6th and 10th fairways.

With golf being one of the few sports able to be played it has been wonderful to see the increased number of players taking to the course. While there have generally been good numbers during the week, Saturdays have been especially popular with usually 30-40 players out enjoying both the better weather and Romsey Park.

Currently the club has two men's shield competitions in varying stages of completion, the Algie Mitchell (1970) and the John Laing (1995) are both down to one semi and finalist. The other men's shield, the club's oldest, the W. E. Tom 4BBB (1965) has not even commenced.

The Romsey Women's Open has been cancelled and our 2020 men's and women's Club Championships have been rescheduled for mid-October. The Graeme Clement Men's Open is due on the 3rd weekend of November. In current circumstances it will be difficult to see any of these going ahead.

Each year, on the 3rd Saturday of September, Romsey and Mt Macedon Golf Clubs compete in the Macedon Ranges Spring Cup, a mixed Stableford event sponsored by Drummond Golf, Niddrie. Sadly, this year's event has been postponed until early next year.

All bookings at www.romseygolfclub.net 'BOOK NOW' button.

For detailed reports on all results at www.romseygolfclub.net/results/2020/



Bruce Smith at Newlyn Reservoir

RIDDELLS CREEK TENNIS CLUB

Tennis is (mostly) back in business! We have reopened all our courts in our Book a Court system for members and non-members to come and play. Please make sure you are practicing good hand hygiene and social distancing whenever you are at the facility and are adhering to all COVID-19 restrictions. You can find out more about these by going to the Tennis Vic website: <https://www.tennis.com.au/vic/news-and-events/covid-19-information-tennis-toolkit>

Go to <https://play.tennis.com.au/riddellscreektennisclub> to book a court.

Our club AGM is scheduled for Monday 12th October at 7:30pm and will be run via a Zoom meeting. The details have been published on our Facebook page so it is an open invitation for anyone to join.

Tennis lessons are continuing in Term 4 do please get in touch with our coach, Scott Vaughan from MRTC to get into a session (mrtc.scott@gmail.com).

Based on the current easing of restrictions for regional Victoria, we are hoping that both Junior and Thursday MTRA competitions will return shortly. If interested, please get in touch with us via email at riddellscreektennisclub@gmail.com.

We are also planning on kicking off our 'Open Court Sessions' social program again when we have confirmation from Tennis Vic that it can safely be run. The format may be a little different this time as we experiment with introducing the 'Fast 4' format. This will be running on Tuesday evenings.

The popular 'Tennis 4 Teens' program will also be back in the calendar when we have confirmation that it can safely go ahead. This will now be run on Monday nights.

A reminder that this year's membership fees have been reduced by 50% - new members can sign up via our website: <https://play.tennis.com.au/riddellscreektennisclub>

Hope to see you at the courts soon!

Fiona Walker

RCTC - President

riddellscreektennisclub@gmail.com

RIDDELLS CREEK BASKETBALL CLUB - RCR

Metro Victoria continues the difficult work during this pandemic remaining in Stage 4 lockdown as we in Regional Vic navigate getting about more freely in COVID Safe ways. As an indoor sport basketball cannot return in Regional Vic until further easing of restrictions. Our club is a member of the Sunbury Basketball Association so it may not be until late November that a Junior competition might commence. We are also uncertain what local training opportunities will be

possible. So please check our facebook page for updates or contact rcrbasketball@gmail.com

The Committee would like to thank all our sponsors and we hope you think of supporting them if requiring any services in their area of business.



SUPPORT OUR SPONSORS

PLANET SHOES



HIGHTECH Plumbing & Gas

Gavin Booth

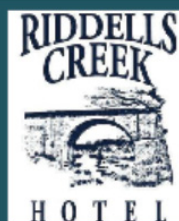
0401 182 948

Lic. No. 101006 ABN. 55438121005

Local plumber, quality work,
prompt friendly service.

- Bathroom & kitchen renovations
- All maintenance plumbing
- Gas fitting & hot water systems
- Rainwater tanks & pumps
- Drainage / Storm-water / Roofing
- Emergency repairs
- Excavating
- Domestic Commercial & Industrial

10-12 Hamilton Street
Riddells Creek
03 5428 6777
riddellscreekhotel.com.au



*Riddells Creek Hotel is OPEN for drinks and dine in
meals as from Thursday 2nd July, 2020*

Our current opening hours are:

BAR Open from 3pm Monday-Saturday

BISTRO We have dine in seating for 20 patrons.
Bookings preferred.

Monday-Saturday

2 sittings 5.30-7pm

7.15-9pm

Sunday CLOSED

*Our Take-Away service for meals and drinks will
continue to operate. Delivery may be limited to
Riddells Creek ONL*

Pick up is always available

*Thank you to our wonderful Community for your
continued support and understanding.*

Helping to keep our community SAFE and WELL



MACEDON RANGES CHAUFFEUR CARS

1300 85 35 75

Sedans, stretch limousines, classic cars,
airport and suburban transfers

PRE BOOKINGS ESSENTIAL

Baby seats no charge for sedans and
stretch limousines. Your safety is our #1 priority
The only company locally where all drivers have
WORKING WITH CHILDREN cards

info@macedonrangeschauffeurcars.com.au
www.macedonrangeschauffeurcars.com.au

Paul the Electrician

(and Jake the Apprentice)

Domestic, Light Commercial
and Rural
Safety Switches and
Switchboard Upgrades
Data & Commo
Emergency repairs
Pensioner Rates

0416 190 968

paultheelectrician@yahoo.com

REC 20327

Podiatrist Riddells Creek

Andrew Baddeley

B.Pod, GradCert.DiabEd

Services to help with;

- ✓ Foot Orthotics
- ✓ Diabetes care
- ✓ Sports injuries
- ✓ Children's feet
- ✓ Heel pain
- ✓ Toe pain

For appointments please call 5428 7591
Available Monday and Wednesday

9 Station St, Riddells Creek

www.rangespodiatry.com.au

RANGES
PODIATRY



Your Ad Here
85% of readers utilise
the services of Riddell
Roundup advertisers!

SHERIDAN
BLINDS & AWNINGS

Your local window covering specialists

BLINDS * CURTAINS * PLANTATION SHUTTERS * AWNINGS * E ZIPS

sheridanblinds.com.au

Contact David or Lee for a professional obligation free
measure and quote

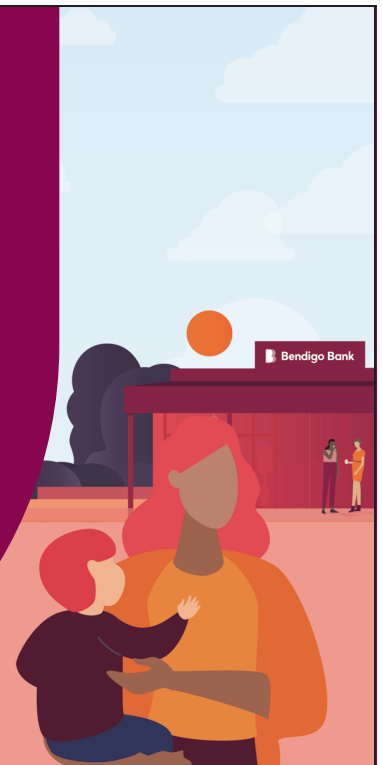
0419034941 | 0417526844

Our home loan specialists...

...are completely dedicated to you. And with the launch of our new Complete Home Loan, you've never been in better hands.

- Fixed or variable interest rate
- Optional 100% offset account
- Free online redraw
- Loan-to-Value Ratio (LVR) tiered pricing for variable rates

Chat to a home loan specialist today, phone Sarah on 5420 7210 or search Bendigo Bank home loans.



Bendigo Bank

bendigobank.com.au

Terms and conditions, fees, charges and lending criteria apply. All information including interest rate is current as at 7 September 2020 and may be subject to change. Full details available on application. Credit provided by Bendigo and Adelaide Bank Limited ABN 11 068 049 178 Australian Credit Licence 237879. A1419239 OUT_1530375, 25/09/2020

Your Riddell Roundup

Coordinating committee: Deb Hull, David Laurie, Leanne Vandermeer, Narelle McGellin, Kate Hanlon, Julie Smith

Editing, Layout and Images Team: Leanne Vandermeer, Lorna Jackson, Jude Ellis, Claire Graham, Deb Hull, Emily Morris, Kristine Rawlinson, Dylan Bottams

Business Development: Narelle McGellin

Printing & Distribution Team: David Laurie, Susie Laurie, Karen Hasselo, Desley Adams, Jennie Pfeiffer, Peter McGellin

Contributors: The deadline for all submissions is the 15th of the month, for the publication on the 1st of the next month (except December). Articles should be in an unformatted Word document and emailed to: riddellroundup@gmail.com.

Alternatively, submissions can be posted to:

Riddell Roundup Editor
PO Box 106
RIDDELLS CREEK 3431

The contributor's name, address and contact number must accompany each submission.

SIZE OF SUBMISSIONS AND PHOTOGRAPHS:

Where possible submissions should be 200 to 300 words and photographs should be supplied as separate JPEG files no larger than 400kb.

Advertisers: Please contact us via email: riddellroundup@gmail.com for current pricing and sizes available.

Editorial Content: Views expressed by contributors are their own and not endorsed by the publisher or the editor of the Riddell Roundup. No responsibility is accepted by the publisher or the editor for the accuracy of any information contained in the text or advertisements. The editor and publisher reserve the right to reject any submissions or advertisement for any reason. Publishing decisions are not based on subject matter and we reserve the right to edit all submissions. We have a policy of allowing all political parties equal access to this platform. We will not print or disseminate any content that we consider to be defamatory, offensive, racist, discriminatory or hateful in any way.

This publication is proudly sponsored by

Foodworks / Advanced Dental Group / Bendigo Community Bank / Essential Solar
Chris Read Real Estate / Riddell Motors / AutoCopy Gisborne
Macedon Ranges Shire Council

With generous support from

Andrew Baddeley Podiatrist, Macedon Ranges Chauffeur Cars, Macedon Ranges Family Law,
Paul the Electrician, Riddells Creek Hotel, Riddells Creek Primary School,
Sacred Heart College Kyneton, Wendi Turner Real Estate, Western Water

Please support those who support us

Riddell Roundup Advertisers

Advanced Dental Group.....	03 5428 7737
Andrew Baddeley - Podiatrist.....	03 5428 7591
Bendigo Community Bank.....	5420 7210
Cassie McTaggart (Riddells Creek Dancing School).....	0439 413 222
Dromkeen.....	0432 282 704
Gisborne Medical Centre.....	03 5428 3355
Essential Solar.....	03 8335 9990
HighTech Plumbing and Gas.....	0401 182 948
JB Painting & Decorating.....	54287542 / 0412 540 789
John Haber Grass Slashing.....	5428 7166 / 0427 058 164
Langley McKimmie Chartered Accountants.....	03 5427 8100
Macedon Ranges Chauffeur Cars.....	1300 85 35 75
Macedon Ranges Family Law.....	5428 8711
Nolan Builds.....	0437 682 442
NorthWestern Property Group.....	5429 1344
Paul the Electrician.....	0416 190 968
Pearce Webster Dugdales Law.....	9670 0700
Poultons Garage.....	5428 7555
Powered Services.....	0401 661 400
Red Creek Real Estate.....	0435 770 030
Riddell Motors.....	5428 6190
Riddells Creek Hotel.....	5428 6777
Riddells Creek Pharmacy.....	5428 6622
Riddell Stockfeed.....	5428 7001
Sheridan Blinds.....	0419 034 941 / 0417 526 844
Sacred Heart College.....	03 5421 1200
Slipstream Motorcycles.....	9740 3100
Smillie Appliance Servicing.....	0414 355 409

Community and Essential Services

POLICE // FIRE // AMBULANCE EMERGENCY.....	000
Riddells Creek CFA.....	03 5428 6000 / 000
Riddells Creek Police Station.....	03 5428 6171 / 000
State Emergency Services (SES).....	13 25 00
Macedon Ranges Shire.....	03 5422 0333
(including emergency after-hours and access to on-call Local Laws rangers)	
Riddells Creek Post Office.....	5428 6602
Riddells Creek Men's Shed.....	(Don Clark) 0409334551
Riddells Creek Primary School.....	03 5428 7277
Riddells Creek Kindergarten.....	03 5428 7207
Riddells Creek Neighbourhood House.....	03 5428 7836
VicEmergency Hotline.....	1800 226 226
Wildlife Victoria – to report injured animal:...	1300 094 535
Poisons Information Centre (VIC):.....	13 11 26
Lifeline—crisis support and suicide prevention: ...	13 11 14
DirectLine—drug and alcohol support.....	1800 888 236
Family Drug Help.....	1300 660 068
Suicide call back service:	1300 659 467
Kids Helpline:	1800 551 800
MensLine Australia:	1300 789 978
1800RESPECT	1800 737 732 24
24 hour national sexual assault, family and domestic violence counselling line	
Centre for Non-Violence.....	03 5430 3000
Translating & Interpreting Service.....	131 450
Free access to a telephone or on-site interpreter in your own language.	
Immediate phone interpreting is available 24 hours, every day of the year.	

Your Quality, Locally Owned Solar Installer



Owned by Riddells Creek resident David Bruce.
We're dedicated to performance, quality & reliability



SMART ENERGY
COUNCIL
SILVER MEMBER

Call today on
(03) 8335 9990
to book your free
in home solar
assessment


essentialsolar
www.essentialsolar.com.au

RIDDELL MOTORS



Phone: 5428 6190

Rear 18 Station Street Riddells Creek

For all your car servicing and repairs, call Joe

- Log Book Servicing
- Diagnosing & Fault Finding
- New Tyres & Wheel Balancing
- Pick Up & Delivery Service Available
- LPG Service & Repairs AAFRB 000910
- Air Conditioner Servicing & Repairs
- 4X4 Servicing
- Breakdown Service Available
- VicRoads Licensed Roadworthy Tester

ARC Registration No. AU26217 / VACC Member / ABN 65 010 575 584