

RIDDELL ROUNDUP

your community newspaper



RIDDELLS CREEK
FARMERS MARKET
SAT - 21ST MAR 2020

Support your local news.

Riddell Roundup is a not-for-profit publication brought to you every month by dedicated volunteers. Email riddellroundup@gmail.com to subscribe for your **free** full colour electronic copy.

- FEBRUARY 2020 -



Fires burning in East Gippsland Picture: Darrian Traynor/Getty Images

Our Bushfire Crisis

Our Amazing CFA Volunteers

The Australian bush is a gift and in Riddells Creek, we are lucky to live with bushland at our doorstep. Unfortunately, many communities throughout Australia are enduring one of the worst bushfire seasons on record. Amidst the unprecedented destruction of native flora and fauna, the tragic loss of lives, livestock and property, there are amazing volunteers who give selflessly to help communities during these fires. Without these volunteers, living rurally would be a much more hazardous proposition.

Riddells Creek CFA have several members who are assisting with the fires along the east coast of Australia. Thank you to:

- North East Vic - Gill Metz, Michael Hemingway
- Gippsland - Daniel Gauci and Dave Thompson
- Singleton / Glen Innes NSW fires - Michael Hemingway, Corey Tschuck
- Glen Innes NSW fires - Michelle Tinworth,

Noah Mills

- Port Macquarie - Daniel Gauci, Nathan Mills
- Batemans Bay - Richard Mason

More locally, CFA volunteers have responded and supported the fighting of the Sunbury fires that started on New Year's Day, as well as the Cobaw forest fire near Pastoria.

It is important to acknowledge the incredible contributions made by CFA members and the many other volunteers in our community. We are so grateful and thank you for all that you do!

The fire season is far from over, it is important to stay safe, be alert and know your bushfire plan.

HOW YOU CAN HELP

Turn to page 9 for details on local initiatives to harness Riddells Creek's renowned generosity - including a fundraiser for BlazeAid and hands-on assistance for our embattled wildlife.

FOODWORKS

Supermarket

For the month of February 2020

Spend \$50 in one transaction (*excl. cigarettes*) and hand in the coupon below for \$5 off your next shop.

One coupon per person per transaction

**Thankyou for supporting your local
Foodworks supermarket**



\$5 Coupon

Redeemable only at Riddells Creek Foodworks

Code 2233 Enter

AROUND RIDDELL...

Pictures, Art, Opinions, History, Updates and Tales from Around Town

CIRC - CHRISTMAS IN RIDDELLS CREEK

Did you enjoy the display of Christmas Trees around the town? A few highlights were the Angel, the 3 Wise Men, the Goose and a Santa Hat. There was a couple of lowlights as well. Someone tried to climb one of the 3 Wise Men. Our Angel was a victim of radiant heat from a nearby grass fire, some vandalism and was then stolen and trashed. The committee was extremely disappointed as we work hard to make this happen but we were heartened by the support from sponsors and locals after each incident.

All the trees are shown on our Facebook page so if you missed any you can see them there. We had a total of 57 decorated trees and numerous waiting to be adopted. The winners were 1st The Goose, 2nd The Santa Hat and 3rd Bakers Delight. They each received a

voucher for Big W who also deserve a big Thank You for their support. Congratulations to them and all the sponsors and decorators.

Our goal is to have more trees, particularly located along Riddell Road but we need your help.

Remember:

- We have small, medium and large trees.
- Sponsorship is for 5 years i.e. a medium tree costs \$500 which equates to \$100 a year.
- If you are a business, it can be considered as advertising.
- Your name or group name on the tree and the sponsors' board.
- We take care of storage so it won't clutter your garage.
- We can supply decorations and

inspiration.

- Lights are part of the sponsorship.
- You get the tree in November with 2 to 3 weeks to decorate.
- We put them out, bring them in, de-construct and store the trees.

Think about sponsoring a tree next year. Community groups, businesses, family groups, neighbours or a group of friends. Anything is possible. We welcome suggestions/ideas for next year and if you would like to become involved with the committee, give Desley a call, you would be most welcome. We are a group of volunteers who want to bring a sense of community and Christmas Spirit to our lovely town.

Romsey has been doing a similar thing for a number of years, let's make Riddell, Romsey, Lancefield a Christmas Tree Trail for all to enjoy.



COMMUNITY GROUP UPDATES

Volunteering, Safety, Community Building and Socialising

RIDDELLS CREEK CFA

BRIGADE INFORMATION NIGHT

Riddells Creek Fire Brigade is looking to bolster their number of volunteer fire fighters, particularly those who are available to respond during the day. We are committed to embracing and encouraging diversity amongst our membership and we'd like to encourage all interested community members to apply. Over the last couple of years we have significantly increased our female firefighter numbers. If you'd like to help out, but not as a firefighter, there are also other roles that might suit you. If you're interested in finding out some more, the brigade will be hosting an information night for potential new members on Tuesday 18th February from 7.00pm at the Fire Station.

FIRE DANGER RATINGS

The Fire Danger Rating predicts how a fire would behave if one were to start. Ratings indicate how easily a fire can start, how intense it could burn, how difficult it will be to put out and how much damage it may cause. The higher the Rating, the more dangerous the conditions, meaning there is a greater risk of an uncontrolled fire, and an increased risk to lives and property. The Fire Danger Rating System includes six ratings from Low-Moderate to Code Red. The rating is your prompt to take action to stay safe and to enact your bushfire survival plan. During the fire season, the Fire Danger Rating will feature in weather forecasts, be broadcast on radio and TV, appear in some newspapers and will be visible on the signs on either side of the road in front of the community house.

COMMUNITY WARNINGS & ADVICE

When warnings are issued you need to understand what each one means. Emergency services send three levels

of warning to help you make decisions about your own and your family's safety.

ADVICE

An incident is occurring or has occurred in the area. Access information and monitor conditions.

WATCH AND ACT

An emergency is heading towards you. Conditions are changing and you need to take action now to protect yourself and your family.

EMERGENCY WARNING

You are in imminent danger and need to take action now. You will be impacted.

Additional messages that may be issued:

ALL CLEAR

Emergency activity in the area has subsided and is no longer a danger to you.

COMMUNITY UPDATE

Specific information & updates for affected communities regarding a particular event or incident.

RECOMMENDATION TO EVACUATE

An evacuation is recommended or procedures are in place to evacuate.

The first level 'Advice' provides general information about potentially dangerous situations and developments. The second level 'Watch & Act' is sent when an emergency threatens you directly and the third level 'Emergency Warning' is sent when you will be impacted by the emergency. A 'Recommendation to Evacuate' may be sent out if there is an imminent threat to you and it is deemed safe to evacuate. **Do not rely on an official warning to leave.** Emergency incidents can start quickly and threaten homes and lives within minutes so it's up to you to monitor conditions, actively seek information and be prepared

to act. The warning level is based on incident conditions and impact on the community; therefore the first warning issued could be an Emergency Warning - the highest level.

Please share this information with your children and other family members.

TURN OUTS

As of the 15th January the brigade has responded to 11 calls for the 2020 calendar year with none of these being in the Riddells Creek Brigade Area.

For the 2019 calendar period the volunteers of the Riddells Creek Fire Brigade responded to 156 separate incidents. Of these call outs, 32 were within the Riddells Creek Brigade area comprising five structure fires, eight non-structure fires, six incidents, two rescues and 11 grass & scrub fires. There were 124 support calls to our neighbouring brigades comprised of: Gisborne (77), Sunbury (24), Bolinda/ Monegetta (six), Clarkfield (five), Romsey (three), Macedon (two), Mt Macedon (two), Bulla (one), and Bullengarook (one) with the brigade's appliances and members also being part of strike teams to NSW and other areas of Victoria impacted by fire.

Brigade Contact Details:

Fire Station Phone: 5428 6000

[www.facebook.com/](https://www.facebook.com/RiddellsCreekFireBrigade)

[RiddellsCreekFireBrigade](https://www.instagram.com/riddells_creek_cfa)

www.instagram.com/riddells_creek_cfa

www.cfa.vic.gov.au

EMERGENCIES ONLY - 000

POLICE NEWS

OFFENDERS PROCESSED

On Sunday 1st December at 1.30am, numerous burnout marks were made around town, mainly in the intersection of Station St and Main Rd.

A 28 year old Melton man will face the

Kyneton Magistrate's Court for hoon driving. His Holden Maloo Ute was impounded and an application will be made for it to be destroyed.

Police executed a warrant at a Clarkefield address and located a large amount of stolen property. The 23 year old male occupant was charged with numerous property and drug offences and remanded in custody to appear before Court in February.

ATTEMPTED THEFT

On Tuesday 7th January at 1.30am, police disturbed two offenders attempting to steal from the MYKI machine on Platform 2 at the Riddells Creek Railway Station. The offenders ran upon police arrival and left behind a backpack containing tools and clothing.

THEFT FROM MOTOR VEHICLE

Between 11pm Fri 10th January and 3am Sat 11th January, offender/s entered a number of unlocked vehicles in Candlebark Crt, Gibson Crt and surrounding area searching through glove boxes and consoles for items to steal. The offenders also stole a vehicle where the keys were left in the vehicle by the owner. Some property stolen from these vehicles was located in Sandy Creek Rd near the intersection of Arrow Crt early that morning. To help reduce the number of thefts from motor vehicles, please consider:

- Always ensuring that your vehicle is locked (especially overnight)
- Park your vehicle in a locked garage (if possible)
- Close gates leading to driveways (create a barrier)
- Do not leave valuables, especially money, in unattended vehicles
- Consider sensor lights
- Be vigilant of your own and neighbours' properties
- If street parking, utilise street lighting in the area
- If you see something / someone suspicious, please contact 000

immediately to report it.

Christmas Decorations

I'd like to thank Desley Adams, project manager of Christmas in Riddells Creek. The decorations give the town a welcoming Christmas atmosphere. The project is a contribution of local families and businesses. It's sad that offender/s damaged, stole and took some of the decorations to different locations during the festive period.

I hope everyone had a merry Christmas and a happy and safe start to the New Year.

If you have any information regarding any matters, please contact me at the Police Station on 5428 6171 or leave the anonymous information with crime stoppers on 1800 333 000.

Leading Senior Constable
Neil Doherty, Officer in Charge
Riddells Creek Police Station

CHARITY'S SECRET

Another year has arrived and is well on its way but I hope you've all enjoyed a wonderful Christmas. The generosity of our community has been overwhelming during the holidays, so much so, that we couldn't keep up with the donations. We have had to share quite a lot of items just to keep our head above water, so to speak.

By opening later in the month the volunteers have had a good break, but of course that meant we weren't moving stock earlier.

Once again I remind you, we cannot sell: cots, mattresses, helmets, baby capsules, car booster seats, prams or strollers and no electrical items of any description, unless in original packaging covered by the manufacturer's warranty - please don't donate them to us, give them to someone who might like them.

Now we're back in the swing, come in to shop, browse or catch up with our lovely volunteers.

Chris 0417 566 486

CWA

Happy New Year Riddellians

WOW where did the Christmas break go! Thank you CiRC for the fantastic display of Christmas Trees, it certainly made Riddell festive. CWA has been quiet since our Christmas Breakup in early December.

We have our first meeting for the year on Tuesday 11th Feb at the Neighbourhood House, then every second Tuesday until November.

Our first meeting is when plans are made for the year ahead, so if you are interested in seeing what we do or have ideas that you would like to put forward please come along.

If you'd like more information please contact Karen 0408792426.

MEN'S SHED REPORT

Riddells Creek Men's Shed finished the year well pleased with their efforts in 2019. The year's closing saw us hold a stand at the Karlsruhe Country Fair where we helped support the Woodend Primary School. It was good to see the Woodend Shed men there too - great to catch up and exchange news and ideas.

Many of the members gathered at the Riddells Creek Hotel for a very enjoyable Christmas meal in December prior to ending the year.

We have started 2020 with a membership of 22 and are always open to new members.

We are looking forward to new and challenging projects - so if there is a community project you think we might be able to help with, please contact us.

We are open on Tuesday mornings between 10:00am and 3:00pm and on Thursday evenings from 7:00pm until 10:00pm.

Cheers, Jeff Shepherd

NW north western
PROPERTY VALUERS

Specialising in: Family Law,
Capital Gains Tax,
Rental Determination,
Superannuation Compliance,
Deceased Estate /
Probate

Ph: 03 5429 1344
Mob: 0411 415 945
5A Station Street, Riddells Creek

NICK WALSH
nick@northwestern.net.au
www.northwestern.net.au


DISTINGUISHED
DRIVE

Airport transfers
Work or social events
Weddings
Travel in luxury for taxi prices

Call Mark - 0407 146 204
www.distinguisheddrive.com.au




Riddells Creek Pharmacy

Professional Health Care, Service & Advice
Blackmore & Swisse Vitamins
Kodak Photo Kiosk
Natic, Max Factor & Sukin
Asthma Pumps, Blood Glucose & Blood
Pressure Monitors

Open: Mon, Wed & Thur 9am-7pm
Tuesday & Friday 9am-6pm
Saturday 9am-1pm

riddells creek
pharmacy

 **alliance**
PHARMACY

7 Station Street
Riddells Creek
T: 5428 6622
F: 5428 7765


POWERED SERVICES
— ELECTRICAL CONTRACTOR —

REC 28638

FOR ALL YOUR GENERAL &
COMPLEX ELECTRICAL SOLUTIONS

DOMESTIC / COMMERCIAL
HEATING / COOLING INSTALL
& MAINTENANCE

ALL TYPES OF ELECTRICAL
SERVICING & MAINTENANCE

OBLIGATION FREE QUOTE

MICHAEL 0401 661 400
POWEREDSERVICES.COM.AU

RIDDELLS CREEK
STOCKFEED
& SADDLERY

NOW UNDER NEW
MANAGEMENT

STOCKFEED
PET FOOD
SADDLERY
HORSE RUGS
VET &
SUPPLEMENTS

FULL DRIVEWAY SERVICE & DELIVERY

We look forward to meeting you, please drop in soon
and say hello

PH 03 5428 7001, 82 MAIN RD, RIDDELLS CREEK 3431
- NEXT TO THE BAKERY -
rstockfeed@inet.net.au

 **RIZZUTO**
Plumbing
Service
Lic No 17379

Plumbing - Gasfitting
Angelo Rizzuto

0428 537 841

rizzplum@bigpond.com




Slipstream
MOTORCYCLES

Free pick up and delivery from Riddell
We Specialise in:

- On-site Roadworthy Certificates
- Factory Warranty Servicing
- Performance Enhancement
- Tyre Fitting all brands
- Repairs and Maintenance
- Dyno in store now

www.slipstreammotorcycles.com.au
Ph 9740 3100
Unit 3 / 65 Horne Street Sunbury
Accident Repair Specialists

Smillie Appliance
Servicing 😊

Servicing Sunbury &
Macedon Ranges Area Daily

- Washing Machines
- Refrigeration
- Clothes Dryers
- Microwaves/Stoves
- Dishwasher

Mobile: 0414 355 409

Your Ad
Here

85% of readers
utilise the
services of
Riddell Roundup
advertisers!

BOOK CLUB

THE MEMORY ARTIST BY KATHERINE BRABON

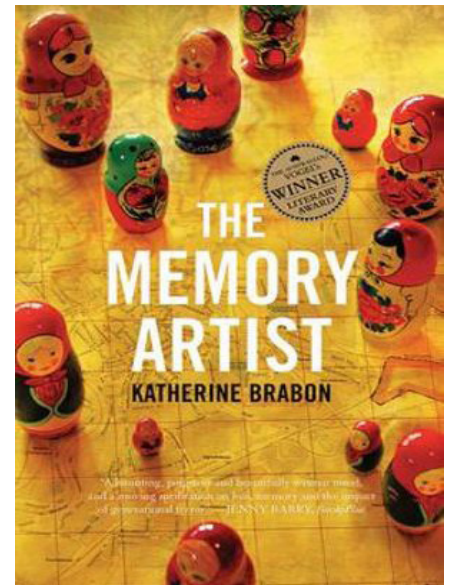
This was a second read for some of the book club members. The story is rather disjointed. Although only moving back and forth over a 10-year period, Pasha, a would-be writer and the main character, is trying to write about a time before he was born (1964 to 1999) – the period of the terrifying Stalinist years in Russia. When Gorbachev promises Glasnost (openness), Pasha interviews various people and friends about the times and memories of what they or their parents

experienced. Many are hesitant and wary about expressing their views, due to the past consequences that involved people speaking out. Pasha also finds it difficult to put his memories into words.

The book club members found the book to be a challenging read.

The young author grew up in Woodend. This is her first novel and was awarded The Australian/VOGEL's Literary Award. Katherine has extensively researched other writers' works to put this story in place. The Gisborne Library has a copy signed by the author.

- Lorna Jackson



HOW TO HELP IN THE BUSHFIRE CRISIS

BLAZE AID FUNDRAISER

If you would like to support bushfire recovery, come along to the [BlazeAid Benefit](#) being held on Sunday 16th February between 1-5pm at Riddells Creek Recreation Reserve.

Cost - \$25 per adult (under 18 free)

There will be live music, auctions, raffle, face painting, jumping castle, dog grooming, ice creams, food vendors, coffee van, BBQ, bar, wristbands, T-shirts and give-aways, RDFNL EAST VS WEST football and netball games and plenty more!

BlazeAid is a volunteer-based organisation that works with families and individuals in rural Australia after natural disasters such as fires and floods. Working alongside the rural families, volunteers help to rebuild fences and other structures that have been damaged or destroyed.

WORKING FOR WILDLIFE

It Takes a Village...

Ranges Rescue are a community based not for profit group set up in the wake of the devastating fires being experienced across Australia. This group was founded by two crafters who wanted to help native wildlife and the communities that supports them. The group has grown rapidly and now has 30 members, who began as strangers and are now a village of crafters with a united passion. Ranges Rescue volunteers have been using the Riddells Creek Scout Hall as a base for the past few weeks and have been crafting madly to produce many different sized pouches and liners.

On Thursday 30th February, Ranges Rescue and Riddells Creek cubs were very busy preparing items for the Crafting Bee Fundraiser to be held at the hall on Saturday 1st February. Aussie animal shaped cookies were baked, ready for kids to buy and decorate on Saturday. Cubs also helped Ranges Rescue crafters make 'hair scrunchies' which will be available to buy along with many other beautiful handmade items.



DONATE TO THE RIDDELLS CREEK BRIGADE OF THE CFA

Help our great volunteers to be bushfire ready. www.cfa.voc.gov.au/about/supporting-cfa



Farmers Market Update

We were blessed with good weather for the first Market of the year and an unsurprisingly large numbers of visitors wandered amongst the 35+ stallholders. The great food on offer was enjoyed by all. In particular, the fresh, hot borek from Ilinka's Country Delights proved ever popular with patrons old and young.

New stalls included Elmhurst Blueberries, whose blueberry farm north-west of Ballarat is just coming to the end of the harvest hump. Their offered taste-testing almost guaranteed a purchase followed.

Miramar Hill Pasture Raised Eggs were another new stall. Beginning with just 20 hens on their property at Lancefield, they now have 200 happy chooks running only 30 to the hectare.

Our very successful cup washing service also picked up the job of washing plates this month, and there were many positive comments to be heard about this great waste-saving initiative. The dish-washers were all enjoying themselves too!

With fires affecting so much of our beautiful country, the market was keen to support the response effort and a donations jar was made available on every stall. A total of \$225 was raised and will be donated to BlazeAid, a volunteer organisation that works alongside rural families to rebuild fences and other structures that have been damaged or destroyed.

Our market is on every 3rd Saturday of the month, 9am-1pm at Riddells Creek Primary School and the next market is on 15th February. Follow us on Facebook for more updates. Look forward to seeing you there!

Callout to Community Groups

We have a BBQ at every market which is available to local community groups to use for fundraising. If your group is interested, please email us: riddellscreekfm@gmail.com



Sam and the dishwashers - saving the world one reusable dish at a time!

All kids are welcome to be dishwashing volunteers!

Come see us at the market.

Big thank you to January's awesome volunteer washers:
Indie, Hugo, Lily, Max, Fred and Jason

Total disposable cups and plates saved from landfill to date: 620



RIDDELL ROUNDUP UPDATE!

A New Laptop for the Roundup

The Riddell Roundup team have a fantastic new laptop thanks to the generosity of John Williamson and his family who run Riddells Creek Foodworks, Riddells Creek's family owned and managed local supermarket.

Their incredible generosity has helped build a bright future for the Riddell Roundup, enabling us to operate independently and continue to design and produce the Roundup for our town to read, enjoy and stay connected.

Supporting local benefits everyone – visit our local Foodworks, check out their website for fresh meal ideas and specials at foodworks.com.au/stores/riddells-creek

Thanks again Williamson Foodworks, you are amazing!



1ST RIDDELLS CREEK SCOUT GROUP

HEADING INTO THE NEW YEAR

As 2019 draws to a close, I reflect on 2019 as a hugely successful year for 1st Riddells Creek Scouts Group where we have witnessed 20% growth in our Youth sections and invested four new leaders, seeing the Scout group grow to 55 Youth Members and 11 Registered Leaders. The parent and family support also grew with four new registered parent helpers helping to ensure we remain sustainable. The year started with 10 Scouts attending the Australian Jamboree in South Australia with 10,000 other Scouts. Throughout the year our Youth members did a range of activities from in-hall activities all the way to scuba diving, sailing, kayaking, hiking, cycling, laser tag, ten pin bowling, camping and even going on a snow camp at Mt Baw Baw.

On behalf of the Scout Group I want to extend a big thank you to our wonderful community for their support afforded to the group, via support of our Youth members at the Farmers Market, our raffles and general events. Throughout the year the Youth members have raised funds through these community events to purchase new equipment to ensure they can attend camps with the required equipment to ensure a great experience.

2020 is set up to be a bigger and better year with many more new experiences for the Youth of Riddells Creek with Joeys and Cubs having major camps (Kangaree and Cuboree). A new frontier is the launch of another age section in the Scout Group. We will launch our new Venturer Unit in January for Youth aged 15 - 18 years old. This is open to all youth in the area. It doesn't matter if you haven't done any Scouting before, you are welcome to join. So if you want to learn new skills, develop leadership and have the opportunity to lower ATAR entry scores to University courses, please

contact our Group Leader.

Andrew Smyth gl.1striddellscreek@scoutsvictoria.com.au

In closing, 1st Riddells Creek Scout Group thanks the community and families for their support throughout 2019 and wishes the community a Happy New Year.



NEIGHBOURHOOD HOUSE

The heart and hub of the community

MAKERS MARKETS

What a great success our Makers' Markets have been and January was no exception! It's been a great opportunity for local artisans to showcase their creativity and products.

In the midst of all of the horrible bushfires we decided to donate the proceeds from the BBQ to our local champions at the CFA. Thanks to two wonderful families, the Ayers family from O'Shanassey Meats and Williamsons Foodworks for donating the goods for our BBQ.

We look forward to seeing you all at our next market on 15 February from 9am to 2pm.

INTRODUCING OUR NEW FACILITATORS

MORNING YOGA WITH FIONA

It's with much passion for Yoga and its many benefits both on and off the mat, that I am excited to introduce my Hatha Yoga class at 9.30am Wednesdays at Riddells Creek Neighbourhood House.

As a single mother of three teenage boys, I have learnt firsthand the results of yoga: it has supported me physically, mentally and emotionally in this ever changing world of stress and challenges. Yoga has been part of my life for over 20 years and my practice has helped me grow stronger, flexible and fearless, in body and mind. Yoga inspires me to live each moment more mindfully. I completed my 200 hour Hatha yoga training with Byron Bay Yoga Centre in 2015. I will always be a student of the practice and am deeply grateful for the loving wisdom my teachers have shared with me.

In my classes, I love to combine creative sequences, a spirit of playfulness and a dose of inspiration to help you deepen your practice. I seek to help others thrive in life by nurturing body, mind and soul with yoga, and my hope is that you step off the mat feeling refreshed, nourished and balanced.

Yoga is the relationship that is built between the body and the mind through the Breath.

MORNING MEDITATION WITH NIKI

My name is Niki. I'm a mum to three kids who all attend Riddell Primary, a business owner and I am PASSIONATE about the benefits of meditation. I would love to share this passion with you at the Riddells Creek Neighbourhood house on Thursday mornings at 9.30am.

Meditation has had such a profound effect on my enjoyment of life with my family, friends and as a business leader. This is why I decided to begin studying an Advanced Certificate of Teaching Meditation with the Australian Centre for Holistic Studies. Meditation is not only a wonderful way to allow our body to enter into a deep state of relaxation, it is also a tool to help you move from a constantly busy mind.

We will sit for practice and also explore the benefits of meditation and other key topics that lead you to living a life with less stress and more connection. There is no 'right person' or 'right mind' for meditation. You don't have to look

a certain way or have any special beliefs. This is meditation for health and wellness.

Drop the kids at school and join me at the Riddells Creek Neighbourhood house on Thursdays at 9.30am for one hour of your time!

SEWING AND TIE DYEING WITH COLLEEN

I have been a silk artist for many years. I combine my love of colour and a spiritual connection to the bush to create individual silk art to wear.

I hand paint on silk -everything starts white - dyeing, over dyeing with French dyes, using a shibori resist technique to create colourful patterns and textures on cloth. I am author of the book 'Silk Painting Step by Step Techniques and ideas for Colour and Design' and curated during the 2004 International Shibori Exhibition in Melbourne.

I have a Grad.Dip.Textiles Design RMIT and have attended master classes in Shibori including a study tour in Japan in 2006 and the World Shibori Symposium in France in 2008. My work has been shown in many group exhibitions including WOW in New Zealand.

I had my own retail outlet in Melbourne for 12 years and now paint from my studio at Mt Macedon where I offer classes. I look forward to the classes I will now be running from the Riddells Creek Neighbourhood House.

EVENING YOGA WITH MEL

I am a yoga teacher based in the Macedon Ranges, Victoria. I am interested in exploring how people relate to each other, to themselves, and to their environments - a question I have been asking since my studies in marine biology and anthropology, and one which I now investigate through the lens of yoga.

My yoga practice balances slow, passive, long-held postures (yin) with more rhythmic, muscular flows (yang). My focus is on cultivating present-moment awareness, energy flow and self-inquiry. I use Tibetan singing bowls, chimes and other instruments for relaxation and meditation.

I look forward to meeting you at our first weekly session starting 6pm Wednesday 5 February.

A NEW INITIATIVE



Macedon Ranges Seed Library
COLLECTION BOX

- collect & dry seeds - pop in sealed bag
- write type, variety, date collected & collector's name.

Pop into Woodend Library & help yourself to Seeds collected by locals

Follow us on Facebook: Macedon Ranges Seed Library
* no GMO or chemically sprayed seeds will be accepted.

RIDDELLS CREEK NEIGHBOURHOOD HOUSE PROGRAMS & ACTIVITIES TERM 1 2020

MONDAY	TUESDAY	WEDNESDAY	THURSDAY	FRIDAY	SATURDAY	SUNDAY
Practise Tai Chi 9.15am-9.45am Social Water and Acrylic Painting Group 1pm-4pm  Philosophy and Ethics Group 3pm-4.30pm	Walking Group (Free) 9am—10am Meet at the front of Foodworks. Scribes and Scribblers 2nd Tuesday of the month 10am—12pm Men's Shed Weekly 10am-3pm Tuesday Yarners 1pm—4pm Travel Club 3rd Tuesday of the month 7pm—9.30pm Country Women's Association 2nd Tuesday of the month 7.30pm-9.30pm	Yoga 9:30am—10:30am Book Club 2nd Wednesday of the month 2pm-3pm Yoga 6.00pm-7.00pm 	Walking Group (Free) 9.15am—10.30am Meet at front of Neighbourhood House Morning Meditation Jan 30- March 19 9.30am-12.30pm Sewing for Adults Feb 13- March 19 9.30am-12.30pm Men's Shed 7pm—10pm Essential Oil Workshops 4th Thursday of the month 7.00pm-9.00pm	Practise Tai Chi 9.15am-9.45am  Prenatal Yoga 10.15am-11.15am Woolly Friends Craft Group 1pm—4pm 	Riddells Creek Makers Market <i>Third Saturday of the month</i> 9am-2pm <i>Save the Date</i> 15th February 21st 	Sunday 15th of March ZERO WASTE DAY ⇒Community Garage Sale ⇒Roving Refills ⇒Clothes swap ⇒Workshops ⇒Information ⇒Coffee

SAVE THE DATE

Local First Aid & CPR Saturday 1st February 9.30-3.30

Natural Summer Skincare with Essential oils Thursday 23rd January 7pm-9pm

Kids and Worry Workshop Wednesday 26th February 6.15pm-8.30

Natural Laundry products with Essential oils Thursday 20th February 7pm-9pm

Indigo Shibori Dyeing Workshop Saturday 28th March

10.00am-3.00pm

Natural Skincare with Essential oils Thursday 26th March



Riddells Creek Neighbourhood House
The heart of our community



Neighbourhood Houses
The heart of our community

CONTACTS:

coordinator@riddellscreeknh.com.au

03 54287836

riddellscreekngh.com

facebook.com/rcneighbourhoodhouse/

Cassie McTaggart
A.I.S.T.D. (ballet, tap and modern),
Dip. Teach. (Early Childhood),
B. Ed. (Primary)

Riddells Creek Dancing School

RIDDELLS CREEK MECHANICS HALL
Established 1981

Tuition in

Classical Ballet, Jazz, Tap and Hip Hop;
for boys and girls; from pre-schoolers
to Advanced

DISPLAYS & ANNUAL
FULLY STAGED PRODUCTIONS

0439 413 222

Dromkeen Gallery & Tearoom

Open Wednesday – Sunday
Morning/Afternoon Tea
& Light Lunches
9am - 5pm

Gallery, Tea Room and Con-
ference Facilities available

Bookings & Enquiries

0432 282 704

JOHN HABER

Grass Slashing, Mowing,
Fire Breaks & Contract
Hay Baling

Fully Insured & Workcover
Approved

Heavy Tilt Tray Services

- For Transporting Machin-
ery, Containers, Vehicles,
Site Sheds, etc
- 9m Tilt and Slide Tray with
an additional 6m trailer
- Interstate Specialist

T: 5428 7166

M: 0427 058 164

ABN 80 453 590 902



Joke of the Month

Q. Why can't you hear a pterodactyl in the loo?

A. Because the P (pee) is silent!

Langley McKimmie

Chartered Accountants

- Business Advisory
- Accounting and Taxation
Services
- Superannuation
- Audit and Assurance
- Bookkeeping Services
- Corporate and
Administrative Services

17 Nicholson Street, Woodend
T: 03 5427 8100

E: info@lmck.com.au

www.langleymckimmie.com.au



J.B. Painting & Decorating

Interior &
Exterior
Domestic &
Commercial
30 years
experience

Free Quotes
Phone - John
0412 540 789
5428 7542



general practice
of the year

16 BRANTOME STREET
GISBORNE 3437
PH: 03 5428 3355

www.gisbornemedical.com.au

Sacred Heart College Kyneton



Sacred Heart College wishes all in the Riddells Creek
community and surrounds a peaceful and Happy Christmas.

*We congratulate our wonderful Year 12 students,
the 'Class of 2019', on their achievements.*

*We are confident their VCE results and selected
pathways will lead the way to rewarding futures.*



A Ministry of Mercy Education Limited - ABN 69 154 531 870

A Vibrant Life

SUSTAINABILITY + ENVIRONMENT

Taking care of our local environment

RIDDELLS CREEK LANDCARE



The River Detectives team will support schools across Victoria in educating children about catchment and waterway health. Deadline for applications is end of February - here is the link to apply for this great initiative and learning experience for our kids: <https://forms.gle/P39PhDvQUsbWRps29>

Jason McAinch is offering an MRSC service to help people grazing livestock improve productivity, and as part of that, soil carbon, our main hope of rapid drawdown of carbon. If you have an acre and a sheep, email me to get in touch: ross.colliver@bigpond.com. If you want to increase soil carbon on your small lot or even in your backyard, email me, I have a few good articles/videos on soil carbon.



On the Amess Road development proposal, there's a report due in February from Council Staff to Councillors on the consultation late last year with the Riddell community. Watch this space.

On the fires, what can anyone here say, except to extend our hearts and hands to those burnt out, and be grateful that, for now, we have been safe.

Ross Colliver

BEE-EWTIFUL BEEKEEPING

Our honey bee club, the 'J Beekeeping school of Melbourne' is running its 26th annual Honey Festival on Sunday 1st March, at our club location in Diggers Rest at the Jadran Social and Sportsclub, 35 Duncans Lane.

This is an opportunity to meet beekeepers, get an insight into the sweet world of honey and have a beautiful day out with family and friends.

We open our gates at 10.00 with a gate fee of \$5 per adult and are planning events for both big and small kids; foods, music, kids corner and demonstrations of keeping bees and extracting honey from beehives. We will also demonstrate the power of the Queen bee bringing her hive out to create a bee-beard onto a well-prepared volunteer.

You can find us on facebook for more information: fb.me/jbeekeepersschool and reach out to our President Martin Starec for more information, on 0423 084 038 or on messenger m.me/jbeekeepersschool



FARM GATE PRICES

Homestead Enterprises

1768 Romsey Road

ROMSEY VIC 3434

- BEANS GREEN \$4
- BROADBEANS \$8
- BUTTER cold SMOKED - \$5.00
- CAPSICUM GREEN \$6
- CAPSICUM RED \$8
- CHICORY & RADICCHIO \$3
- CHILLIES \$24
- CUCUMBERS \$3
- EGGPLANT \$6.
- EGGS \$7
- FEIJOAs \$10
- GARLIC \$3/ 100g
- HERBS - \$3.00
- HORSERADISH per 100g \$2
- JAMS, RELISH, CHUTNEYS \$7
- KALE - BUNCH \$3
- LEMONS (each) \$0.50
- MIXED LETTUCE, KALE \$3
- ONIONS per kg \$2
- PEAS per 100G \$2
- PICKLES - large jars \$10
- PLUMS per kg \$4
- POTATOES per kg \$3
- PUMPKIN per kg \$2
- RASPBERRIES per 100G \$3
- RHUBARB per bunch \$5
- SMOKED SALT - 80g \$10
- SILVERBEET \$4
- TOMATOES \$8
- TOMATOES - CHERRY per 100g \$2.50
- TOMATILLOS \$22
- ZUCCHINI \$3

THIS MONTH IN MY GARDEN

Melanie Kinsey

It's hard to feel enthused about our gardens when so much devastation is going on around us. But as gardeners we can help! Many gardeners in burnt-out areas may not be looking to re-establish their gardens just yet, but one day they will. When that day dawns, any donations of plants, cuttings or seeds will be gratefully received. You can start collecting and labelling seed now and perhaps join the Macedon Ranges Seed Library on Facebook. Might be a bit early for cuttings – but maybe not. In the past, after a disaster, ties were often established between gardening clubs where help and donations were offered and gratefully received. Many years ago, I seem to recall a link established between one local gardening club and the people of Wangaratta after devastating floods swept many a garden away. So I would encourage you all to reach out through your local gardening club and make the links now.

Even without much rain, my garden is looking quite good. I enjoyed a lovely day wandering around cutting back *Salvia* 'Hot Lips' to encourage a fresh flush of flowers for the bees; deadheading the Jerusalem sage; summer pruning the roses and of course pulling out the weeds. I also invested in an old-fashioned soaker hose to give my thuja hedge a jolly good soak. It might have been planted in 2005, but it still needs the occasional watering during summer. I think I may have been better off planting a juniper hedge, because they are much more drought tolerant. However too late now. My little propagation unit is full of pots of cuttings and some are ready for potting up – always a busy day! It's such an easy and fun way to create more plants for your garden.



WESTERN WATER ASSISTING WITH BUSHFIRE RECOVERY EFFORTS

Communities in East Gippsland are set to benefit from specialised water treatment equipment from Western Water, as part of the bushfire recovery work in the region.

Western Water will be providing three 'Siltbuster' clarifier machines to East Gippsland Water to assist with their operations in bushfire affected areas.

The equipment is designed to remove sediment out of water, with the clarifiers combined capable of processing 108,000 litres of contaminated water an hour.

They are a vital addition to treating water sources with high levels of sediment, prior to the water entering a water treatment plant to produce drinking water.

The units were not in active service, so are available for immediate delivery to East Gippsland Water. Western Water staff are also available to help install, commission and operate the machines if required.



South East Water, based in Frankston, is coordinating bushfire aid on behalf of the Victorian water industry to water corporations in impacted regions across the State.

Western Water Managing Director Jeff Rigby said, "We've seen the devastating effects of the recent bushfires across the country, and like all Australians, we will provide whatever help we can during the recovery efforts."

Providing the filtering equipment is in addition to the many individual efforts Western Water and its employees are making to support their fellow Victorians during the current fire season.

"Western Water staff have generously donated money and goods to the bushfire appeals, and a number of employees have volunteered their time to relief organisations helping out on the ground," he said.

SO EXCITING WE COULD WET OUR PLANTS

NEW OWNERS LAYING NEW ROOTS AT WEBBERS NURSERY

My name is Georgie Taylor, I am a Mt Macedon resident with 3 young children all under 6! I grew up on a broad acre farm and have a strong background in agronomy with many hours of experience in corporate retail, events and I previously ran 70 coffee shops.

I hope to create an amazing mixed retail business building on the great existing business of Webbers Garden Center. Riddells Creek Nursery is a garden center for garden lovers. We will always aim to give the best quality customer service. This is something I pride myself on and I know my team feel the same way.

We understand the trust we have inherited from previous customers as Greg and Annette built an exceptional business through ensuring if a customer brings a plant to the counter and it won't grow in their backyard, they are told to put it back. We hope to continue this trust in our brand.

We have opened a garden cafe currently selling coffee. Each weekend through February we will have a special event on at the nursery including three food trucks.

We are also continuing the popular massive easter sale, so watch out for more announcements regarding this!

Please follow us on social media @riddellscreeknursery on [Instagram](#) and [Facebook](#) for updates.



THANK YOU MR & MRS WEBBER

Of course we can not talk about these changes without acknowledging the past. For 43 years, Annette and Greg Webber have provided tireless, dedicated commitment to providing the Macedon Ranges with gardening support.

It doesn't feel so long ago that as children we would ride our bikes like the clappers down dusty Whittakers Lane to source a cheeky 50cent icy pole and scratch the resident kangaroos behind the ears - I was a happy customer long before I gardened. So many of the stunning local gardens and landscapes owe their tenacity and beauty to your hard work, Webbers - whether we are gardeners ourselves or not, we should all be grateful for your dedication. Enjoy your well deserved retirement! -Ed



"Local Lawyers helping local families rebuild their lives"

FAMILY LAW

Parenting, Child Support, Divorce, Property Settlement,
Family Violence

WILLS & ESTATES

Wills, Powers of Attorney, Probate, Survivorship

Contact our office to arrange a consultation today.
www.macedonrangesfamilylaw.com.au

MACEDON RANGES SHIRE COUNCIL ENVIRONMENTAL UPDATES

DOGS OFF LEASH

Residents and dog owners in the Macedon Ranges Shire have new rules for their dogs this year.

The new guidelines, which came into effect on 1 January 2020, are in keeping with Council's new Dog and Cat Order 2019 - Domestic Animals Act 1994 and will require that dogs be kept under effective control in public places and be leashed in all public places, except in designated off leash areas.

In designated on-leash areas, dogs must be restrained using a leash, chain or cord attached to an appropriately fitted collar, harness, or halter, all of which must be in good condition. Dogs must wear a current Council registration tag and not be allowed to harass, interfere with, or behave in an anti-social manner toward another person or animal. Dogs cannot be left unattended (e.g. temporarily tethered in a public place).

The order also prohibits dogs and cats in some public places in the shire, for environmental reasons.

The prohibited areas are:

- Mount Gisborne Reserve, 198 Mount Gisborne Road, Gisborne
- Malmsbury Common, 96 Mollison Street, Malmsbury
- Gisborne Marshlands, Gisborne Steam Park, New Gisborne
- Woodend Grassland, 1-27 Forest Street, Woodend
- Hanging Rock Reserve, South Rock Road, Woodend

These changes have taken place following extensive public consultation as part of the development of Council's Domestic Animal Management Plan 2017-2021. For a definition of 'effective control' and a list of off leash areas, including any restrictions in those areas and further information, call (03) 5422 0333 or visit mrsc.vic.gov.au/dogs.

NEW FOGO SERVICE STARTS

As part of Macedon Ranges Shire Council's new food organics garden organics (FOGO) service, free kitchen caddies are being delivered to more than 14,000 kerbside collection customers throughout the shire.

An estimated third of the contents of the average household rubbish bin in the Macedon Ranges Shire is food waste. Council has worked to find innovative solutions to the waste and recycling industry crisis, Acting Mayor Cr Mandi Mees said. "We will deliver a more sustainable and responsible waste collection service in 2020 through the introduction of this new four-bin kerbside collection service."

During the phased rollout, residents will receive a kitchen

caddy, compostable caddy liners and an information pack, including a collection calendar.

All garden and food waste can be placed into the FOGO bins. This means that, along with garden waste, you will be able to put all food waste into your garden bin, including meat and bones, to be turned into compost. Those without a garden bin will receive a new 240-litre bin (lime green lid) for FOGO.

Collection of FOGO bins will be weekly, with collection services starting in early February.

The four bins in the new kerbside collection service are:

- Glass only (purple lid)
- Recycling (yellow lid)
- FOGO (lime green lid)
- Rubbish/general waste (red or dark green lid)

For more information, see mrsc.vic.gov.au/FOGO



**Macedon
Ranges**
Shire Council

HEALTH & WELLBEING

Caring for our Community

RELAY FOR LIFE

An invitation to celebrate cancer survivors, remember loved ones lost, and fight back against cancer at Lancefield/Macedon Ranges Relay For Life!

Cancer survivors and carers are our guests of honour at Relay For Life. The Relay will commence with a special survivors and carers lap, to celebrate the lives of cancer survivors, and to acknowledge the support of their carers. Our definition is that you are a survivor from the first day of diagnosis, throughout treatment and through your life. Our definition of a carer is that you have cared for someone going through a cancer experience in some way. Timing is irrelevant – you are still considered a carer even if your loved one has passed away.

Relay For Life is open to everyone, and carers are invited to walk even if the person they cared for is not attending. Following the opening lap we welcome the survivors and carers to an afternoon tea. The volunteer organising committee for Lancefield/Macedon Ranges Relay For Life is asking if you could pass this information on to anyone you think would like to attend the Survivor and Carers opening lap and afternoon tea.

Please see times below:

- 3pm Saturday 29th February – 10am Sunday 1st March
- Lancefield Park, Lancefield.
- Opening Ceremony: 3pm (registrations from 2pm) Saturday 29th February 2020
- Survivors and Carers lap: 3.10pm Saturday 29th of February 2020

For further information, please contact Sandra Clark on 0421 839 050.

If you're interested in registering a team, joining a team or volunteering please email lancefieldrfl@cancervic.org.au, call 1300 656 585 or visit the Lancefield/Macedon Ranges Relay For Life Facebook page or http://fundraising.cancervic.org.au/site/TR/RelayforLife/CCVIC?pg=entry&fr_id=5699



MORE SHADE TO PROTECT THE RIDDELLS CREEK COMMUNITY FROM SKIN CANCER

MARY-ANNE THOMAS LABOR MEMBER FOR MACEDON

More of the Riddells Creek community will be protected from the sun's harmful UV rays, thanks to the Andrews Labor Government installing more sunshades in public areas and sports clubs.

Member for Macedon Mary-Anne Thomas announced that Riddells Creek Tennis Club will receive a share in almost \$1 million from the fourth round of the Community Shade Grants Program. Riddells Creek Tennis Club have received a \$10,000 grant to construct a permanent shade shelter. When used alongside other sun protection measures such as sunscreen and clothing, shade structures are the best defence and can reduce overall exposure to UV radiation by up to 75 per cent.

Through this program the Labor Government is supporting locals to keep active and enjoy the outdoors, while also helping them to be sun smart and prevent skin cancer. Australia has the highest rate of skin cancer in the world, with two in three people diagnosed by the age of 70.

In 2017, 270 Victorians died from melanoma and almost 3,000 people were diagnosed with invasive melanomas – making it the fourth most common cancer across the state. The five-year survival rate for Victorians diagnosed with invasive melanoma was at 90 per cent in 2013-16.

The Labor Government has provided a \$10 million boost for the program in the Victorian Budget 2019/20, paving the way for more schools and community groups to install shade over the next four years. This initiative is part of the Labor Government's election commitment to provide \$15.1 million over four years in SunSmart programs.

It forms part of the Labor Government's ambitious Victorian Cancer Plan 2016-20 which sets out a target of saving 10,000 lives from cancer over a decade.





YOUR LOCAL DENTIST

Advanced Dental Group

Emergencies, Weekend &
Late Appointments Available

Wisdom & Surgical Extraction Under Sleep Dentistry and
General Anesthesia at Kilmore Hospital

We Bulk Bill under the Child Dental Benefit Schedule

Riddell's Creek - 5428 7737
Wallan - 5783 4727

www.advanceddentalgroup.com.au

AN ABUNDANCE OF ZUCCHINIS



If your zucchini plants are going berserk and you are having trouble keeping up with all the fresh produce like I am, you may like to try this recipe –

ZUCCHINI, FETA AND DILL PIE

- 700g zucchini coarsely grated
- 5 eggs
- ½ cup olive oil
- 1 cup chopped chives
- ½ cup chopped dill or mint or basil

- 180g feta
- 150g grated parmesan
- Freshly ground black pepper to taste
- 1 cup self-raising flour
- 12 cherry tomatoes, halved

METHOD

Preheat oven to 180 degrees Celsius. Brush a medium baking dish with olive oil, line with baking paper, brush with olive oil again and dust with polenta. Break eggs into a large bowl and whisk together. Add olive oil, chives and dill, mint or basil and whisk in.

Squeeze excess water from zucchini and stir through egg mixture. Crumble in most of the feta, add parmesan, pepper and flour and mix (I use disposable gloves as it gets quite thick).

Spread mixture into prepared dish and sprinkle remaining feta on top. Press cherry tomato halves, cut side up, into the surface.

Bake for 45-55 minutes or until top is springy when pressed and golden. It is very forgiving and you can cook it for longer if required. Note: I double my recipe and use a lasagne tray. It freezes well too.

Leanne Vandermeer

In a bushfire emergency you may have low water pressure or no supply.

Please consult your local CFA about bushfire preparation for your family and home.

To find out more go to
westernwater.com.au/bushfires

WesternWaterAU westernwater



Wendi Turner | Licensed Real Estate Agent | Auctioneer

Trusted Local Real Estate Agent

- ✓ Friendly & Knowledgeable
- ✓ Proven Success
- ✓ FREE Sales & Rental Advice
- ✓ SMART Property Marketing
- ✓ Market Leaders
- ✓ Creating A Better Experience



BUY | SELL | APPRAISE
0435 770 030 | wendi@davidpinorealestate.com.au

ARTS, CULTURE AND EVENTS

Celebrating Creativity Across the Ranges

MOUNT PLAYERS

AUDITIONS, AGM, THEN THE MOUNT PLAYERS HEAD TO SWITZERLAND

Our first production for 2020, 'Switzerland' by Melbourne based playwright, Joanna Murray-Smith, opens on Friday 28 February. 'Switzerland' is a two-hander, metaphysical thriller set in the secluded home of Patricia Highsmith, famous author of the Tom Ripley novels. When meek and mild Edward Ridgeway is sent by Highsmith's publisher to coax a new Ripley novel out of her, Patricia takes him in, in spite of her usual reservations. As the two of them begin to flesh out the new book a power struggle plays out between them.

Auditions for our 2nd production, Noel Coward's 'The Vortex' to be staged in May/June, will be held on 5 & 9 Feb. A play reading will take place on Wed 29 Jan at 7.00 pm. For further details or to book an audition time call Karlana on 0412 131 260.

Our AGM will be held on Monday 10 February at 7.30pm

for nibbles followed by meeting at 8.00 pm at the theatre. For full details on these shows, play reading, auditions and AGM go to www.themountplayers.com

See you at the theatre.

By Karen Hunt

ADFAS 2020 PROGRAM

It is with great excitement that the Association of Australian Decorative and Fine Arts Societies (ADFAS) CV introduces our 2020 program at our new venue, Norma Richardson Hall, Woodend at a new starting time, 1.30pm.

Please join us on Thursday 27 February 2020, when Charles Harris will present our first lecture, Alphonse Mucha and the Creative Process. Entry is \$30 cash or cheque payable on the day and this includes afternoon tea and a glass of wine. (2.30-3.30pm).

For more information and registration (required for catering) please call Nicky on 0400 958 449

THE BARINGO FILM CLUB

February 2020

- February 5th- 8th The Catcher was a Spy
- February 12th-15th Everybody Knows
- February 19th- 22nd Rocketman
- February 26th-29th Red Joan

baringofilmclub@gmail.com

WHITE GOOSE FILM CLUB

The film we are showing at The White Goose film club on Thursday 27th February from 7:30 pm will be "The Intouchables". It is an acclaimed movie from France, winning many awards from around the world. It is an amusing and heart-warming film inspired by the true story of Philippe Pozzo di Borgo and his French-Algerian caregiver Abdel Sellou. As is usual, there is no charge for attending the movie. Supper is available afterwards. Patrons are also invited to stay to explore the themes and issues arising from the movie.



MACEDON RANGES MUSIC FESTIVAL

Headlining the 2020 Macedon Ranges Music Festival, a family-friendly one-day event, will be internationally renowned singer Kylie Auldist, best known for her 2016 award-winning megahit 'This Girl', alongside some of Australia's most revered live performers.

On the Main Stage will be blues favourite Geoff Achison & the Souldiggers, Shaun Kirk, African funk band One Spirit Africa and singer-songwriters John Flanagan Trio and Grace Jean. Macedon Ranges musicians will be represented in a performance from the MPMC Funkateers & Guests featuring vocalists and members from local big bands.

The festival is a community event which donates 100% of sales to the Woodend-based Cambodian Kids Foundation. It will also feature a pop-up cocktail bar, award-winning food trucks and stalls, virtual-reality station, kids' activities and a Youth Stage, featuring some of the finest emerging local performers. Sideshows to be announced soon. Follow our Facebook and Instagram pages to stay up to date.

For tickets visit www.macedonrangesmusicfestival.org

- Date: Saturday 14th March, 2020.
- Place: Gisborne Steam Park, New Gisborne.
- Ticket prices (Early Bird): Adult - \$25, Concession - \$20, Youth (13-17) - \$10, Kids (under 12) - FREE.



FESTIVAL NO. 23

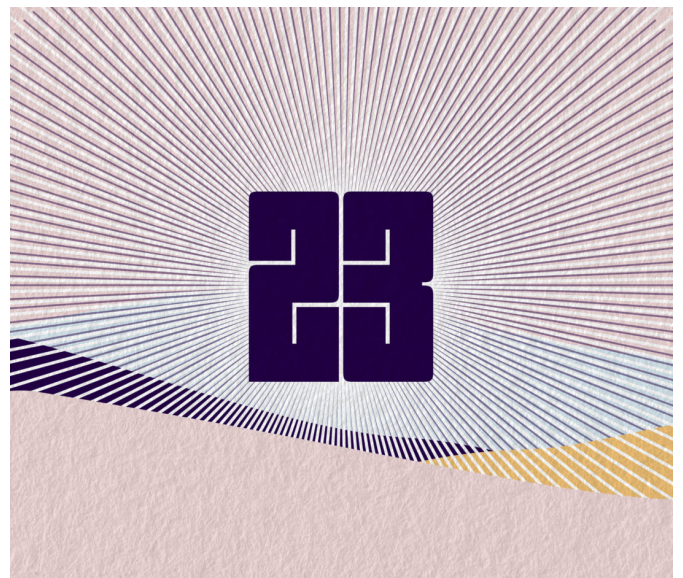
Festival No.23 is an immersive arts and music retreat in the Macedon Ranges. A proper party experience coupled with opportunities for regeneration, inspiration and that little something magical that happens when we come together with common intention. We invite you to come and connect with each other and the beautiful natural surrounds, and to leave better than you came.

THE INTENTION: The ultimate grown-up playground, Festival No.23 celebrates indulgence while being refined. It will leave you refreshed, not ruined. Engaged, not exhausted. Our intention is to create a middle ground between a decadent bush doof and a spiritual retreat experience so that people don't have to pick and choose, but can enjoy both.

WHAT'S ON OFFER: Imagine indulgent sophistication dancing hand-in-hand with a carefully crafted line-up of electronic music acts, art and DJ's. Well-manicured hedonism with a quietly spiritual bent; and carefully cultured appreciation of art, music, workshops and food. This is a step away from the traditional bush doof. Next level, new format.

THE LOCATION: Lancemore Macedon Ranges (formerly Spring Hill Estate by Lancemore), Kilmore-Lancefield Road, Lancefield VIC, Australia

WHEN: 7th February 2020 -9th February 2020



ART IN THE VINES

Following on from the hugely successful Art in the Vines – Sculpture Exhibition & Trail in 2018/19, visit the winery before 23 February 2020 to experience Art in the Vines – Sculpture in Motion.

Art in the Vines – Sculpture in Motion is an exhibition of kinetic sculpture. We're talking art that depends on motion for its effect...some of which will be mounted on poles up to three metres high!

Our renowned Exhibition Curator, Malcolm Thomson has again been engaged to deliver Art in the Vines, this year working with 15 world-class artists to develop and create sculptures that will thrill, mesmerise, excite and intrigue.

With these amazing sculptures set against our unparalleled vistas, just picture yourself wandering the trail glass-in-hand, then finding your place to settle in with one of our picnic boxes or cheeseboards.


Art in the Vines – Sculpture in Motion is both the perfect destination to fill a weekend, and the perfect event to build a weekend around.

Entry to the exhibition is free.

Art in the Vines - Sculpture in Motion is being delivered with the support of Macedon Ranges Shire Council.




Pic credit Debbie Karwata



A single ember can spread bushfires as far as **40km**.

Burning embers from bushfires can travel up to 40km, starting new fires in seconds, destroying homes and making escape impossible. If the Fire Danger Rating is ever extreme or above, don't hesitate. Leave early.

How well do you know  fire?

Plan. Act. Survive. Go to emergency.vic.gov.au

Authorised by the Victorian Government, 1 Treasury Place, Melbourne



MACEDON RANGES CHAUFFEUR CARS

1300 85 35 75

Sedans, stretch limousines, classic cars,
airport and suburban transfers

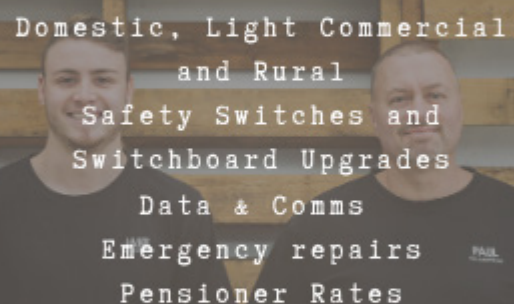
PRE BOOKINGS ESSENTIAL

Baby seats no charge for sedans and
stretch limousines. Your safety is our #1 priority. The
only company locally where all drivers have WORKING
WITH CHILDREN cards

info@macedonrangeschauffeurcars.com.au
www.macedonrangeschauffeurcars.com.au

Paul the Electrician

(and Jake the Apprentice)



Domestic, Light Commercial
and Rural
Safety Switches and
Switchboard Upgrades
Data & Comms
Emergency repairs
Pensioner Rates

0416 190 968

paultheelectrician@yahoo.com

REC 2032I

LEARNING LOCALLY

Education in Riddells Creek



RIDDELLS CREEK PRIMARY SCHOOL

2020

Wow - what a start to 2020! We welcome all our new families to Riddells Creek Primary and we congratulate our preps for their successful start to their formal schooling life. We hope you enjoy your time at our school.

There were a few tears (and not just from the students!). I'm fairly certain there were some happy tears from parents of our older students that they were out of their hair and back to working hard at school!

We are really looking forward to a year jam-packed with learning and tapping into our students' interests and ideas. We are expanding our leadership opportunities for students, and already have a talented bunch of leaders in 2020 Year 6 preparing their speeches for school captain and house captain roles.

We welcomed new staff this year – Sarah Barclay, Anh Castles and Leona Goodwin in year 1/2; and Lyndsay Adamson in year 5/6. Welcome to the Riddells Creek Primary School teaching staff. We know you will love it!

Emma Brooksby

Principal

2019 GRADE 6 GRADUATION MEMORIES





DROMKEEN STORY TIME

It's apple and pear picking time and, to celebrate, story time will be all about apples and pears this month! Come along and join in the fun as we read fabulous books about apples and pears and complete a craft activity to celebrate these delicious fruits.

Dromkeen Homestead and Gallery: 1012 Kilmore Rd, Riddells Creek



MONTESSORI PRESCHOOL

KEY DATES TO KICK OFF 2020

FRI 31st JAN - **CLOSED**

MON 3rd FEB - 4 year old kinder - attend as normal

- 3 year old kinder - see individual start dates/times

We look forward to seeing everyone soon !!

www.macedonrangesmontessori.com.au/

DEVELOPMENT AND INFRASTRUCTURE

The business of being local

AMENDMENT C117 – LANCEFIELD PLANNING CONTROLS APPROVED

Lancefield's township character will be preserved and maintained following the Victorian Government's approval of new planning controls.

Amendment C117 - the Lancefield Development Plan Overlay (DPO) now forms part of the Macedon Ranges Planning Scheme. Approved and gazetted by the Minister for Planning on 16th January 2020, the DPO guides any future subdivision and development of residentially zoned land in Lancefield and corrects a mapping error made to the township boundary. Approval of the DPO follows three years of development and consultation with the community, as well as an independent planning panel review.

Three major changes were made to the approved Development Plan Overlay Schedule 24 by the panel including:

- Deleting a permit condition requirement relating to the provision of infrastructure
- Providing for no more than two development plans each in Area (adopted schedule allows for up to three development plans)
- Including a new requirement in DP024 that development in all areas must have or on completion have more than a BAL-12.5 rating under A53959-2009 Construction of Buildings in Bushfire-prone Areas (Standards Australia, 2009).

Director Planning and Environment, Angela Hughes said the DPO responded to how the community wished to see the town develop into the future. "This decision means we can retain Lancefield's established urban form and heritage character including the street design and grid layout," Ms Hughes said. "This means residents and visitors can continue to enjoy wider road reserves in key access streets and street tree planting consistent in pattern and structure with older parts of the town."

For more information, see mrsc.vic.gov.au/C117

GOOSE UPDATE

Roundup requested clarification from Council regarding the current situation regarding the Riddells Creek geese, and Council responded that "last year Council engaged with the Riddells Creek community, police and VicRoads about how to best make the area near the reserve safe for all users."

Those discussions are ongoing. Please note there are no plans to remove the geese from the area. During the consultation we received lots of ideas for keeping the geese, drivers and pedestrians safe were put forward and as a result we'll be exploring:

- *advocating to VicRoads to reduce the speed limit to 50 km/h on Main Road near the intersection of Sunbury and Riddell Road (currently 70 km/h)*
- *installing warning signs on the road*
- *putting gates at the park entrance*
- *installing educational signs at the park about feeding the geese.*

If you are travelling through Riddells Creek, please be mindful of the geese and slow down when approaching this area."

BENDIGO BANK AT THE MARKET

Gisborne & District Community Bank Branch is looking forward to another year of providing quality banking services to the Riddell community and reinvesting local profits in community groups and projects that benefit our area.

In 2019, we were pleased to contribute over \$40,000 to community projects in Riddells Creek, supporting tennis, netball, cricket, basketball, pony club, Christmas in Riddell, Riddells Creek Park Upgrade and the neighbourhood house.

We would like to hear from you how we can support the Riddell community in 2020 and will have a stall at the Riddells Creek Farmers Market and Makers Markets at the Neighbourhood House on February 15. Please stop by and have a chat with members of our volunteer board and staff to share your ideas. See you there!

BIKE ED - WITH GEESE!

The Riddells Creek Primary School children in grades 5 and 6 participating in Bike Ed were delighted with the unexpected local cheer (honk?) squad providing their support on the day! Road safety is for everyone, right?



LABOR PARTY CONTENT: BOOSTING SAFETY ON OUR ROADS

The Andrews Labor Government is getting on with a major package of road safety upgrades from Romsey to Monegeetta including two roundabouts, an overtaking lane and new barriers to provide a safer journey for everyone travelling around the region. Member for Macedon Mary-Anne Thomas said works are now underway to construct a new roundabout at Barry Street and Main Street that will boost safety and improve traffic flow at the busy intersection in the centre of Romsey.

Mary-Anne Thomas said: “We’ve listened to the community and are making sure these high-risk intersections are much safer by building two new roundabouts – which are proven to drastically reduce the risk of crashes. We’re also installing new barriers and an overtaking lane on Melbourne-Lancefield Road to help give drivers a safer journey on this key route.”

Construction of a second roundabout is also underway at

Melbourne-Lancefield Road and Gisborne-Kilmore Road in Monegeetta, as part of the next stage of major safety upgrades for Melbourne- Lancefield Road. Roundabouts are proven to drastically improve safety at intersections, including reducing the risk of being seriously injured in a crash by up to 80 per cent. Further works getting underway to improve safety on Melbourne-Lancefield include a northbound overtaking lane and new flexible safety barriers between Monegeetta and Romsey.

The barriers will be installed centreline and on the roadside in high-risk locations to reduce the likelihood and severity of head-on and run-off road crashes. Construction on the Barry Street roundabout is expected to be complete by June 2020, weather permitting, while the package of Melbourne-Lancefield Road works is expected to be complete by mid-to-late 2020.

Traffic management will be in place with reduced speeds for the safety of the community and roadworkers, while there may be road closures in Romsey at times.

To keep track of these works, visit regionalroads.vic.gov.au.

Your home loan and insurance all under one roof.

Talk to us today

 **Bendigo Bank** The better big bank.

Terms, conditions, fees and charges apply. Full details available on application. Lending criteria apply. Bendigo and Adelaide Bank ABN 11 068 049 178 AFSL 237879 acts under its own Australian Financial Services Licence number and under an agreement with a range of insurers. (1402762-1408138-4) (12/19)

SPORTS

Celebrating our local sports clubs and teams

RCJMBA AND RAPTORS BASKETBALL

We hope all our RCJMBA families have had a wonderful summer holiday. Training is underway for the upcoming Bendigo tournament to be held over the Australia Day weekend. Our kids are super excited and giving it their all at training. The summer season for RCJMBA will re-commence in early Feb. We are looking forward to another great year of basketball and thank all of our sponsors and volunteers for making it possible.

RCJMBA CHRISTMAS RAFFLE

Our annual Christmas raffle was a huge success with 24 lucky winners taking home hampers full of goodies. Thanks so much to our amazing basketball community for supporting this fundraiser by donating items and buying tickets!



LAPS FOR LACHY

On Sunday the 1st of December many of our RCJMBA and Raptors players and families participated in the Laps for Lachy fundraising event for mental health and suicide prevention. Thank-you to everyone that participated - we're so proud that we could show our support to help raise awareness around these important issues.



RCJMBA CHRISTMAS PARTY

A big thank-you to our sponsor, Gary and the team at Mocha Leaf, for hosting our committee, ref team & Raptors volunteers for our Christmas break up! It was a fun night for all and the pizzas were delicious.

This Committee actually are super amazing! We have a bunch of people who are all about getting kids out on the court and providing a platform for them to learn and develop. We really are very lucky!

It was great to have so many of our volunteers together to thank them for all that they have given throughout the year.



RIDDELLS CREEK BASKETBALL (RCR)

BOUNCING INTO 2020

The Christmas break saw many of our players itching to get back to basketball. Well done to those players that completed their holiday basketball homework – great to see such enthusiasm.

As we head into the second half of the season, we would like to thank all of our dedicated Coaches and Team Managers for the many hours of volunteering. There is so much more to coaching than many of us realise. Including research and planning behind the scenes, so from all of us – thank you!

JUNIORS

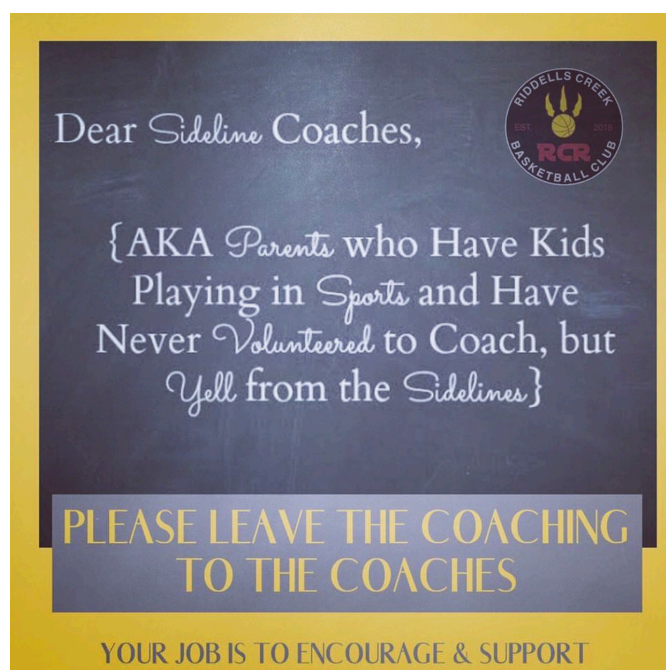
Games commenced on Saturday 1st February leaving us with five games to go before finals. Ladder standings see eight of our thirteen teams in the top four of their grades with U14 LN girls, U16 SB boys and U19 AP boys sitting pretty on top of their ladders.

Congratulations to all of the RCR players who represented the Riddell Raptors in the Bendigo Junior Classic Basketball Tournament over the Australia Day weekend.



SENIORS

Our Senior Men's teams head into the 2nd half of the season with seven games remaining and all three teams are sitting nicely with the chance of making finals – thank you to our Junior players who have filled in when needed.



RIDDELLS CREEK TENNIS

Hi everyone. Happy New Year and welcome to 2020! This year is looking like being a big one for our club. We have many new and exciting projects on the go.

Firstly, our Stage Two courts project to build three new hard courts will begin construction very soon – just waiting on the project plan to be confirmed by MRSC. We have been successful in securing a Victorian Government grant from the Shade Grants Program from the Department of Health and Human Services. The grant for \$10,000 will be used to build a new shade sail structure at the courts. This will be a very welcome addition on these hot days.

We are also about to launch the very new Tennis Australia 'Open Court Sessions' program. Open Court Sessions means no commitment, just fun tennis in a friendly environment! This new social tennis format means anyone can rock up, pay casually and play against others of the same standard.

Come along and enjoy our first session for free! Our first session kicks off on Monday 3rd February at 7:30pm at the tennis courts. The program will run for seven weeks. So get your racquet out! You can register your attendance here: play.tennis.com.au/ (search for 'Riddells Creek' or postcode '3431') by selecting our Open Court Sessions program.

Our Tennis Vic 'Tennis 4 Teens' program is running again in Term One and we encourage new participants to come along and try this fun program. If you know a teen (aged 12-17 years) who is interested in joining the program this term then they can sign up at tennis4teens.com.au and search for Tuesdays 7pm session.

Thursday night MRTA Autumn competition is kicking off soon and if you are interested in joining one of our teams then contact us via our Facebook page.

Anyone interested in tennis lessons (for adults or juniors) should get in touch with our club coach Scott Vaughan from Macedon Ranges Tennis Coaching (mrta.scott@gmail.com).

And finally a reminder that our 'Book A Court' system is available to both members and non-members, bookings can be made via the website: play.tennis.com.au/

Fiona Walker – President RCTC

WINNERS ARE GRINNERS!

Fiona Walker has been recognised for her service to tennis by being presented with a Community Champion Award at the Tennis Victoria Volunteers' Breakfast during the Australian Open 2020.

Fiona's desire to see junior participation flourish has seen the club invest in the Tennis Victoria Future Leaders program so that they can encourage the next generation to be more involved in the club, resulting in this award. She has a positive and infectious attitude and is always keen to further develop the knowledge base of the coaches and adopt programs to grow participation.

"I don't do it to get anything out of it for me I just want to help the club and support them," Walker said.

Congratulations Fiona, well deserved!!

ROMSEY GOLF CLUB REPORT

Like most sporting clubs, RGC has many ADF veterans, disabled and older members. Earlier in 2019 the club applied to the Bendigo Bank for funds to help us purchase a motorised golf buggy to assist these members to continue both their active sporting life and social engagement. Our application was successful and after some research by our most canny members, John Freestone and Bruce Robb, we now have a motorised buggy to assist these members during club and other competitions. We would also like to thank local MLC Mary-Anne Thomas for her donations towards the purchase of the buggy.

On Dec 21, after a very enjoyable round of Ambrose over the 12-hole "Old Course", we held our presentation afternoon. It was great to see many life members in the room enjoying the meal and the 2019 presentations. A number of club events and activities were highlighted before the presentations.

The RGC 'The Longest Day' team "Old Bull Golf" had a very successful campaign raising just over \$11,500 for Cancer Research. Two other teams also completed their '72 holes in a day' at RGC as well. Well done one and all.

In our December report we noted the arrival of the Long Billed Corellas. So far they have had a peck at a few greens and really only seriously damaged the 7th and 16th. Traditionally these birds really rip up at least three greens and damage many others so perhaps (fingers crossed) we may get off a little lighter this time.

RGC turns 100 in 2021. We are currently working towards the centenary celebrations. If anyone has documents, photographs or other memorabilia the club would be very pleased to have a lend for our research. All items will be well cared for and returned immediately after they have been scanned, photographed etc.

For RGC Weekly Competition Results, go to www.romseygolfclub.net/results/2019/

Pres: 0417 088 891, Sec: 0400 768 040
www.romseygolfclub.net



WHATS ON IN THE RANGES?

GISBORNE MINIATURE & MODEL RAILWAYS

Webb Road New Gisborne

Believe it or not, our January Railway Run day was rainy! Some faithful stalwarts still turned up for a ride on the train nevertheless, and we were happy to oblige. We have been busy smoothing out the railway track with more gravel and preparing a special set of rails for the arrival of a full-size tram. It should come any day now, so watch out for it.

Our next Run Day will be from 11am-3pm, Sunday 2 February.

Our friends, Ray and Daniella from Foxes Lane coffee van, will be there too, selling hot and cold drinks and food.

Contact: Anthony 0400 087 896

This little fellow had a lovely day exploring absolutely everything. And yes! Mum gave permission for this photo to be published!



HARMONY DAY

Come and join in the celebrations in March and bring friends and family to celebrate cultural diversity in the Macedon Ranges as part of National Harmony Week, a celebration of inclusiveness, respect and belonging for all Australians.

On Saturday 21 March, from 2pm to 5.30pm, a colourful and lively performance of music and dance will be held at Woodend Children's Park, 12 Nicholson St, in Woodend.

Musicians Joseph Samarani and Saba El-Chiekh, who are experts on the table, a wooden hand drum, will demonstrate their talents. There will also be workshops in belly dancing, hip-hop, Afro-fusion and break dancing. Experience the power of word, song and dance to unite, as these talented performers highlight the richness of our collective cultural heritage.

Tickets are free. For bookings, visit mrscvic.gov.au/arts-events or contact the box office on 1300 888 802.



SEARCH BEGINS FOR 2020 YOUTH AMBASSADORS

The search is on for young people interested in being youth ambassadors and becoming part of the Macedon Ranges 2020 Youth Ambassadors Program. The program is a youth leadership initiative, aimed at bringing together young people aged 15 to 21 years from the shire.

The goal is to provide these young people with opportunities to develop their leadership potential throughout the year. The ambassadors participate in a diverse range of activities aimed at enhancing their understanding and application of leadership skills on both a local and broader level.

The role also includes representing young people's views and presenting directly to Council as well as designing and implementing a community project in response to youth issues. The ambassadors also support the planning and delivery of the annual Macedon Ranges Youth Awards. These awards have recognised and celebrated the achievements and success of hundreds of young people in all sectors.

The youth ambassador program runs from 4.30pm-6pm each Tuesday at the Kyneton Town Hall. Meetings are held fortnightly in term one, weekly in terms two and three, and as needed in term four.

For more information about the program, visit mrsc.vic.gov.au/youth

To obtain an application form for the ambassadors' program, email Sarah Day at sday@mrsc.vic.gov.au or call 0436 632 361

RIDDLELLS RIDDLES

Fun for the whole family

COLOURING FUN: THANK YOU CFA

CAPTAIN KOALA AND FRIENDS



WORDSEARCH

F O B H S C O U N T R Y R H H
I T C E I H F W S S G E E E B
R A O R R O C T E E G R D A U
E N M O E T H S N N C P A T R
P K M E N G O A A K A U J S N
L E U S I H L D C M A N H B S
A R N L S P W U H E L P E R S
N B I E M E R G E N C Y L A G
C J T A U T H O R I T Y I V X
O Z Y U E B R I G A D E C E W
I H N R P Y T R E E S N O R A
B T I B E F F L A M E S P Y T
A F E R L A D D E R S Z T L E
S A I C H A R C O A L B E P R
H F J V O L U N T E E R R N J

BRAVERY
FIRE
FLAMES
VOLUNTEER
WATER
COMMUNITY
FIRETRUCK
SIREN
LIGHTS
BRIGADE
TANKER
TREES
GRASS
BURN
CHARCOAL

ASH
HEROES
HOT
FIREPLAN
EMERGENCY
MAP
HEAT
RED
HOSES
LADDERS
DANGER
COUNTRY
AUTHORITY
HELPERS
HELICOPTER

AUSTRALIA DAY QUIZ

Australia Quiz - General Knowledge (source <https://www.australiaday.org.au/>)

1. How many countries are larger than Australia?
 2. In what state/territory was the highest recorded temperature, of 53oC, recorded?
 3. Australia has the world's largest sand island. What is its name?
 4. In what year was Advance Australia Fair proclaimed as the national anthem by the Governor-General?
 5. Do all states/territories have the same blood alcohol limit for non-probationary drivers?
 6. What animal is on the Western Australia flag?
 7. In what city did the Commonwealth Parliament first sit?
 8. What animal featured on the 2 cent coin?
 9. Who is the only person to have been awarded both the Australian of the Year and Young Australian of the Year titles?
 10. Who is on the front of the current issue \$100 note? 2
- Answers

Answers:

1. *Five (Australia is the sixth largest country: Russia, Canada, China, USA, Brazil)*
2. *Queensland*
3. *Fraser Island*
4. *1984*
5. *Yes*
6. *Black swan*
7. *Melbourne*
8. *Friilled neck lizard*
9. *Cathy Freeman*
10. *Dame Nellie Melba & Sir John Monash.*

BONUS TRIVIA

Did you know? Sir John Monash was involved in Falbarrow House, Riddells Creek being the first Victorian property to have electricity!

HOW MANY GEESE DOES IT TAKE TO CROSS
THE ROAD? ABOUT THAT MANY

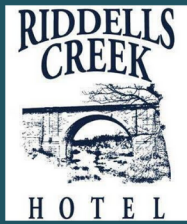


Did you know?

The median age of people in Riddells Creek (Urban Centres and Localities) was 41 years. Children aged 0 - 14 years made up 21.0% of the population and people aged 65 years and over made up 13.7% of the population.

Source: 2016 census data

10-12 Hamilton St,
Riddells Creek
03 5428 6777
riddellscreekhotel.com.au



Monday & Tuesday Night Specials:

- 2 Parma's - \$30
- Porterhouse Steak - \$16.50
- Fish & Chips - \$15

Special Seniors Menu and Special Lunch
Menu available Wednesday to Friday
lunchtimes

Happy Hour in the bar every Friday night
5.30-6.30 pm

Live Music in the bar Friday 7th February

2020 Live Music in the sun – Beer garden
Sunday 1st March 2020. Free Entry, All
Welcome

Podiatrist Riddells Creek

Andrew Baddeley

B.Pod, GradCert.DiabEd

Services to help with;

- ✓ Foot Orthotics
- ✓ Diabetes care
- ✓ Sports injuries
- ✓ Children's feet
- ✓ Heel pain
- ✓ Toe pain

For appointments please call 5428 7591
Available Monday and Wednesday

9 Station St, Riddells Creek

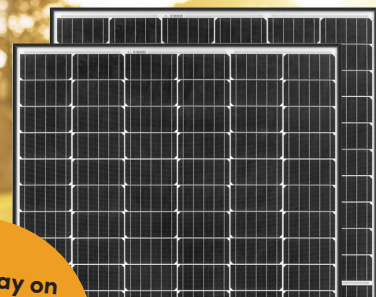
www.rangespodiatry.com.au

RANGES
PODIATRY



Saving *for* the future

Installing solar panels on your home
can help secure your family's
financial & environmental future



Owned by Riddells Creek resident David Bruce,
we're dedicated to performance, quality & reliability



SMART ENERGY
COUNCIL
SILVER MEMBER

Call today on
(03) 8335 9990
to book your free
in home solar
assessment


essentialsolar
www.essentialsolar.com.au

Your Riddell Roundup

Coordinating committee: Deb Hull, David Laurie, Meagan Upsher, Leanne Vandermeer, Narelle McGellin, Kate Hanlon, Julie Smith

Editing and Layout Team: Leanne Vandermeer, Meagan Upsher, Lorna Jackson, Jude Ellis, Claire Graham, Deb Hull, Emily Morris, Dylan Bottams

Business Development Team: Narelle McGellin

Printing & Distribution Team: David Laurie, Susie Laurie, Karen Hasselo, Desley Adams, Jennie Pfeiffer, Peter McGellin

Contributors: The deadline for all submissions is the 15th of the month, for the publication on the 1st of the next month (except December). Articles should be in an unformatted Word document and emailed to: riddellroundup@gmail.com.

Alternatively, submissions can be posted to:

Riddell Roundup Editor
PO Box 106
RIDDELLS CREEK 3431

The contributor's name, address and contact number must accompany each submission.

SIZE OF SUBMISSIONS AND PHOTOGRAPHS:

Where possible submissions should be 200 to 300 words and photographs should be supplied as separate JPEG files no larger than 400kb.

Advertisers: Please contact us via email: riddellroundup@gmail.com for current pricing and sizes available.

Editorial Content: Views expressed by contributors are their own and not endorsed by the publisher or the editor of the Riddell Roundup. No responsibility is accepted by the publisher or the editor for the accuracy of any information contained in the text or advertisements. The editor and publisher reserve the right to reject any submissions or advertisement for any reason. Publishing decisions are not based on subject matter and we reserve the right to edit all submissions. We have a policy of allowing all political parties equal access to this platform. We will not print or disseminate any content that we consider to be defamatory, offensive, racist, discriminatory or hateful in any way.

This publication is proudly sponsored by

Advanced Dental Group / Bendigo Community Bank / Essential Solar
Chris Read Real Estate / Riddell Motors / AutoCopy Gisborne
Macedon Ranges Shire Council

With generous support from

Andrew Baddeley Podiatrist, Macedon Ranges Chauffeur Cars, Macedon Ranges Family Law,
Paul the Electrician, Riddells Creek Hotel, Riddells Creek Primary School,
Sacred Heart College Kyneton, Wendi Turner Real Estate, Western Water

Please support those who support us

Riddell Roundup Advertisers

Advanced Dental Group.....	03 5428 7737
Andrew Baddeley - Podiatrist.....	03 5428 7591
Bendigo Community Bank.....	03 5420 7210
Cassie McTaggart (Riddells Creek Dancing School).....	0439 413 222
Chris Read Realestate.....	0418 588 275
Distinguished Drive	0407146 204
Dromkeen	0432 282 704
Gisborne Medical Centre	03 5428 3355
Essential Solar.....	03 8335 9990
JB Painting & Decorating	5428 7542 / 0412 540 789
John Haber Grass Slashing	5428 7166 / 0427 058 164
Langley McKimmie Chartered Accountants.....	03 5427 8100
Macedon Ranges Chaffeur Cars	1300 85 35 75
Macedon Ranges Family Law.....	5428 8711
NorthWestern Property Group	5429 1344
Paul the Electrician	0416 190 968
Powered Services	0401 661 400
Riddell Motors	5428 6190
Riddells Creek Hotel	5428 6777
Riddells Creek Pharmacy.....	5428 6622
Rizzuto Plumbing	0428 537 841
Sacred Heart College	03 5421 1200
Slipstream Motorcycles.....	9740 3100
Smillie Appliance Servicing.....	0414 355 409
Wendi Turner Real Estate	0435 770 030
Western Water	1300 650 422

Community and Essential Services

POLICE // FIRE // AMBULANCE EMERGENCY.....	000
Riddells Creek CFA	03 5428 6000 / 000
Riddells Creek Police Station.....	03 5428 6171 / 000
State Emergency Services (SES).....	13 25 00
Macedon Ranges Shire.....	03 5422 0333
(including emergency after-hours and access to on-call Local Laws rangers)	
Riddells Creek Post Office.....	5428 6602
Riddells Creek Primary School.....	03 5428 7277
Riddells Creek Kindergarten.....	03 5428 7207
Macedon Ranges Montessori Preschool	03 5428 6376
Riddells Creek Neighbourhood House.....	03 5428 7836
Powercor Faults	13 22 06
VicEmergency Hotline:.....	1800 226 226
Wildlife Victoria — to report injured animal:...	1300 094 535
Poisons Information Centre (VIC):.....	13 11 26
Lifeline—crisis support and suicide prevention:	13 11 14
DirectLine—drug and alcohol support.....	1800 888 236
Family Drug Help	1300 660 068
Suicide call back service:	1300 659 467
Kids Helpline:	1800 551 800
MensLine Australia:	1300 789 978
1800RESPECT	1800 737 732 24
24 hour national sexual assault, family and domestic violence counselling line	
Centre for Non-Violence.....	03 5430 3000
Translating & Interpreting Service.....	131 450
Free access to a telephone or on-site interpreter in your own language.	
Immediate phone interpreting is available 24 hours, every day of the year.	

CHRIS READ
REAL ESTATE

Email: chris@chrisread.properties

Web: chrisread.properties

109 Sandy Creek Road, Riddells Creek



**More Properties Urgently
Wanted to meet Buyers Demands**



"Your Local Real Estate Agent for the Past 32 Years"

0418 588 275



63 Kerrie Road, Riddells Creek



**RIDDELL
MOTORS**



Phone: 5428 6190

Rear 18 Station Street Riddells Creek

For all your car servicing and repairs, call Joe

- Log Book Servicing
- Diagnosing & Fault Finding
- New Tyres & Wheel Balancing
- Pick Up & Delivery Service Available
- LPG Service & Repairs AAFRB 000910
- Air Conditioner Servicing & Repairs
- 4X4 Servicing
- Breakdown Service Available
- VicRoads Licensed Roadworthy Tester

ARC Registration No. AU26217 / VACC Member / ABN 65 010 575 584